

Iris based User Authentication

For Rockwell FactoryTalk View SE, ME & PanelView Plus 7 displays

Features & Benefits

- Secured & Improved authentication
- Simplified iris enrolment
- User friendly iris verification process
- Support to FTVIEW SE, ME Station
- Support to PV Plus 7 Performance
- Users can be domain/windows based
- USB based Iris scanner (Monocular)

Applications

- ✓ Stand-alone FTVIEW SE/ME Station
- ✓ Domain based SE Client/SE & ME Station
- ✓ Domain based PanelView Plus
- ✓ Stand-alone PanelView Plus
- ✓ Line Integration in Pharma

Products

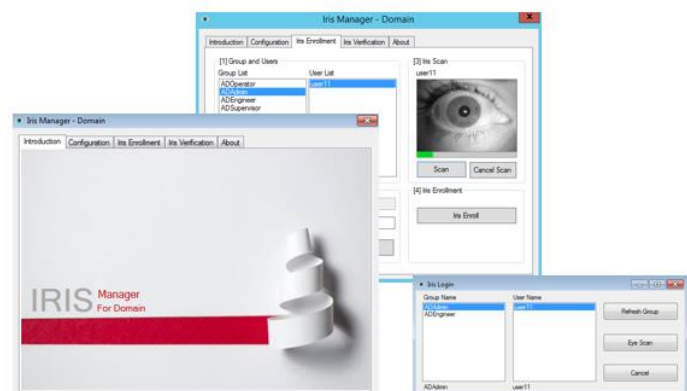
- IrisManagerDomain
- IrisVerifySE, IrisVerifyME, IrisVerifyCE
- IrisManagerWin
- IrisVerifyWinSE
- IrisVerifyWinME
- IrisManagerWinCE
- IrisVerifyWinCE



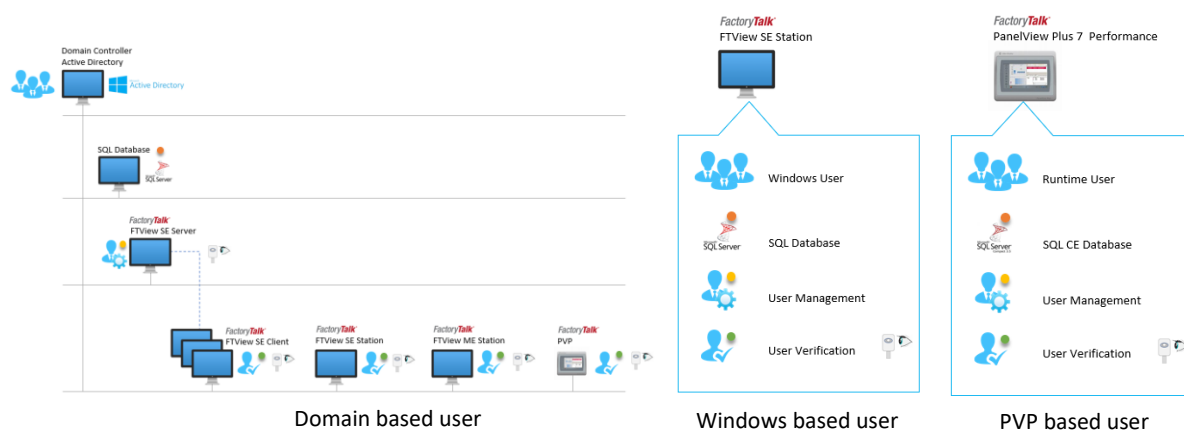
Iris recognition, a biometric, provides one of the most secure methods of authentication and identification. Once the image of the iris has been captured using an iris scanner, further process involves user enrolment, comparison & accurate authentication with low rejection rates.

Combination of user name, password and user iris image improves & secured authentication process due to unique iris image.

A person doesn't need physical contact with the devices to perform an iris scan.



System Architecture



Products

IrisManagerDomain	Iris Enrolment for domain-based user
IrisVerifySE	Iris Verification from FTView SE Client/Station for domain-based user
IrisVerifyME	Iris Verification from FTView ME Station for domain-based user
IrisVerifyCE	Iris Verification from PanelView Plus 7 (Performance) for domain-based user

IrisManagerWin	Iris Enrolment for Windows-based user
IrisVerifyWinSE	Iris Verification from FTView SE Station for windows-based user
IrisVerifyWinME	Iris Verification from FTView ME Station for windows-based user

IrisManagerWinCE	Iris Enrolment on PVP terminal for PVP runtime user
IrisVerifyWinCE	Iris Verification on PVP terminal for PVP runtime user

Reference Manual

	For Domain User	For Windows User	For PVP User
Installation Instruction Manual	DN-IM001-EN	WIN-IM001-EN	PVP-IM001-EN
Configuration Manual	DN-CM001-EN	WIN-CM001-EN	PVP-CM001-EN
Operational Manual	DN-OM001-EN	WIN-OM001-EN	PVP-OM001-EN
Reference System Architecture	DN-SA001-EN	WIN-SA001-EN	PVP-SA001-EN

www.sharadsoft.com

Feedback/Support

Your comments will help us serve your iris authentication needs better. If you have any suggestions/support require, then drop the email on 'info@sharadsoft.com'.

Location: Mumbai, India.