



Installation Instruction Manual

Windows based user iris enrolment & verification

WIN-IM001-EN

Contents

Prerequisites	2
<i>Operating System</i>	2
<i>Database</i>	2
<i>Rockwell Software</i>	2
<i>Sharadsoft Software</i>	2
<i>Hardware</i>	2
Iris Driver Installation	3
<i>Hardware Connectivity</i>	3
<i>Iris Scanner driver installation on Windows PC</i>	3
Iris Software Installation	6
<i>IrisManagerWin Installation on PC</i>	6
<i>IrisVerifyWinSE Installation on PC</i>	8
<i>IrisVerifyWinME Installation on PC</i>	10
Reference Manuals	12

Prerequisites

Operating System

Workstation: Windows 7 Professional with Service Pack 1 (64 bit)

Database

SQL Server 2014 Express Edition (64 bit)

Rockwell Software

FactoryTalk View Studio (Version 10)

FactoryTalk View SE Station (Version 10)

FactoryTalk View ME Station (Version 10)

Sharadsoft Software

IrisManagerWin: For Iris Enrollment of windows-based user

IrisVerifyWinSE: Iris verification on FTView SE Station

IrisVerifyWinME: Iris verification on FTView ME Station

Hardware

Iritech, Irishield series MK2120UL (Monocular)

<http://www.irittech.com/products/hardware/irishield%E2%84%A2-series>

Iris Driver Installation

Hardware Connectivity



IriShield™-USB
MK 2120U

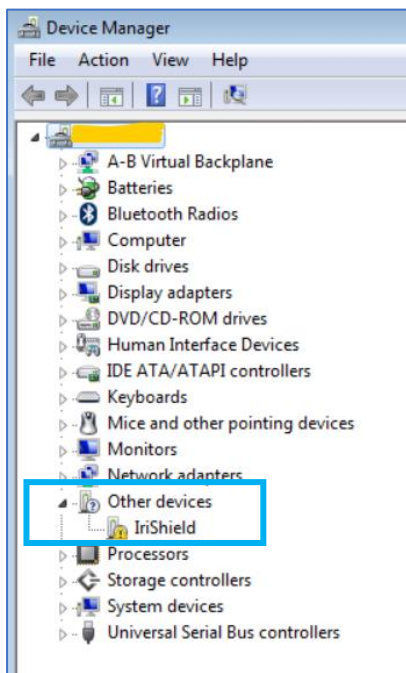


Micro USB cable

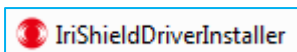
Connect USB based Iris scanner (MK2120UL) to PC/PVP.

Iris Scanner driver installation on Windows PC

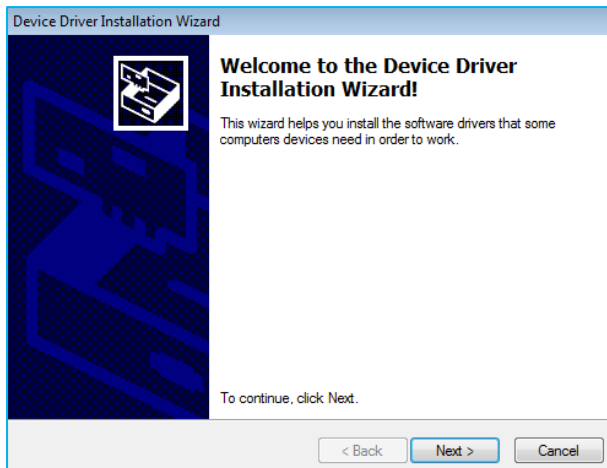
Navigate to 'Device Manager' in windows. In 'Other devices' category you can find 'IriShield' with yellow symbol which indicates that driver need to be installed.



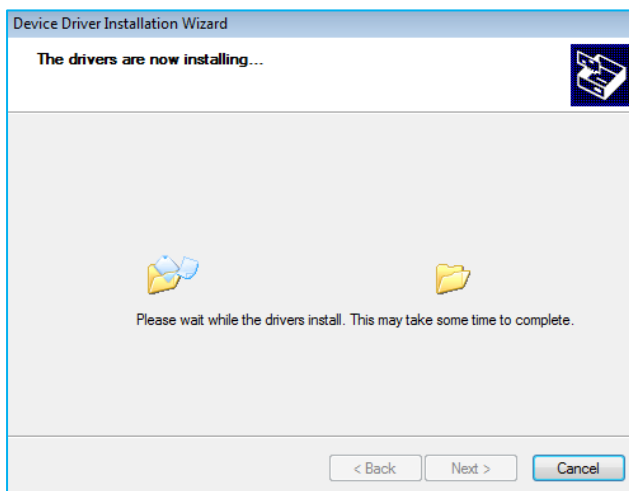
Double click on 'IriShieldDriverInstaller'.



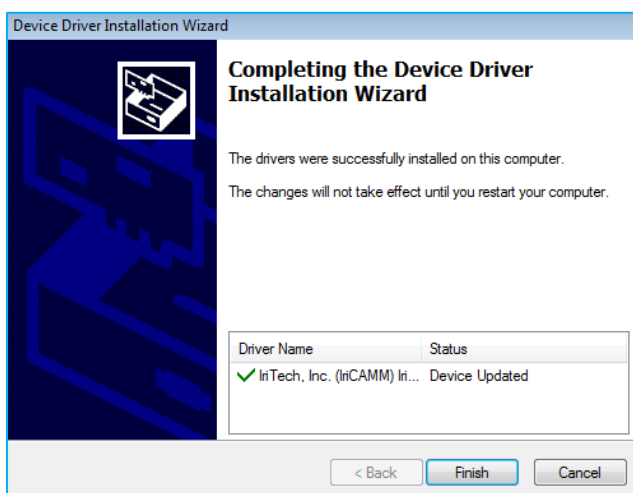
Press 'Next' button.



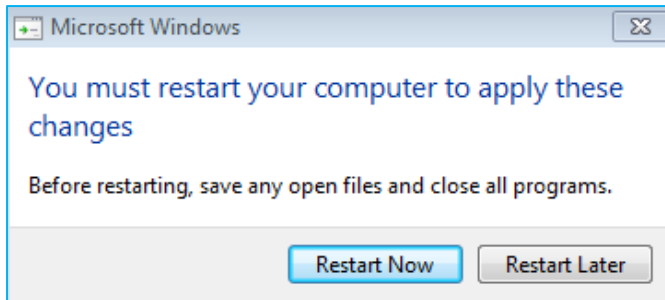
Installation is running...



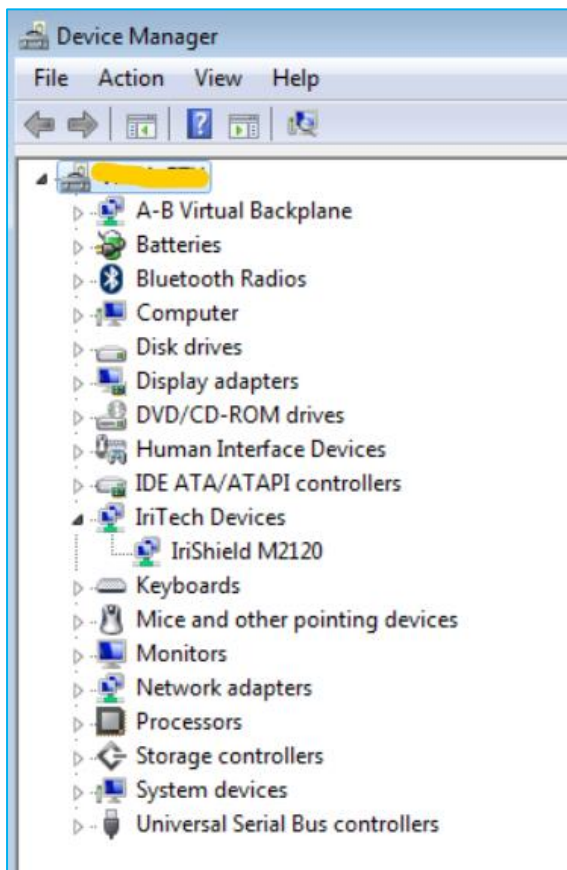
Press 'Finish' button.



Restart the PC.



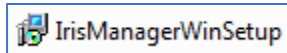
Following window shows that driver installation is completed successfully.



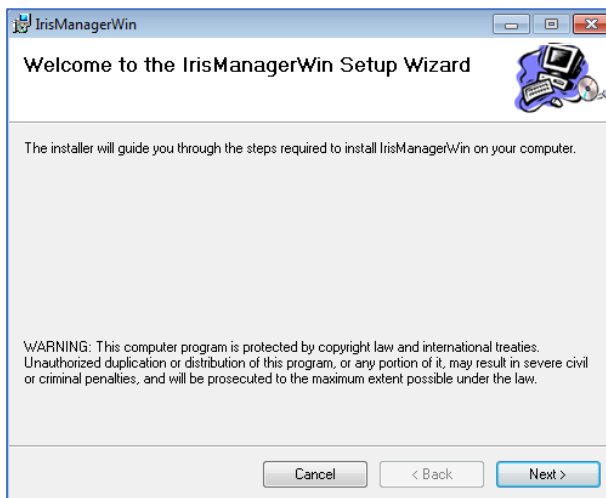
Iris Software Installation

IrisManagerWin Installation on PC

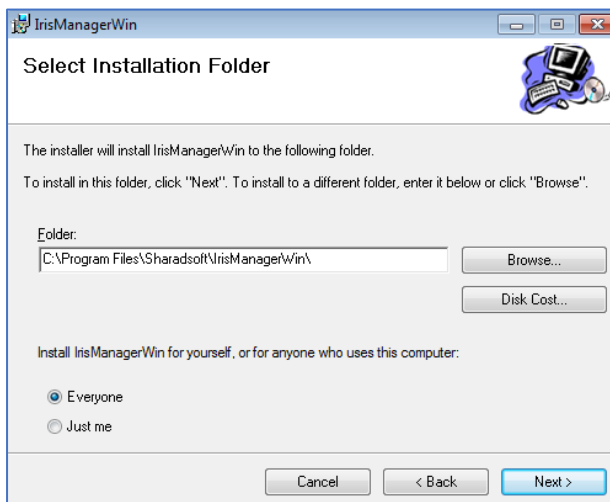
Double click on 'IrisManagerWinSetup'. It will initiate installation process.



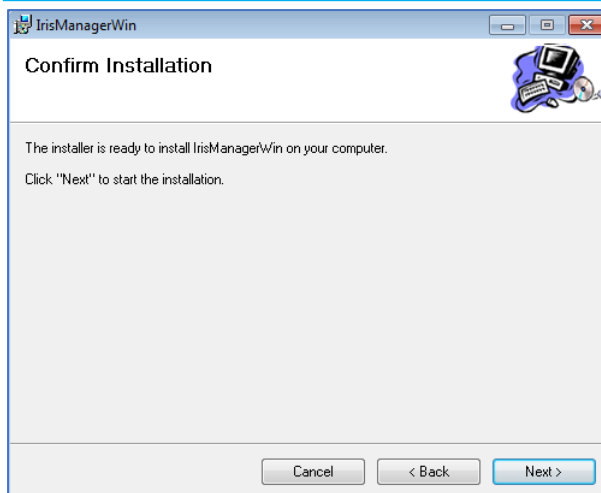
Follow the onscreen window to complete the installation process.



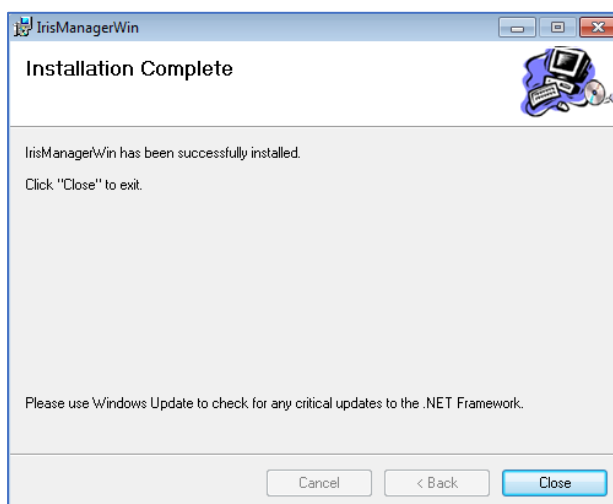
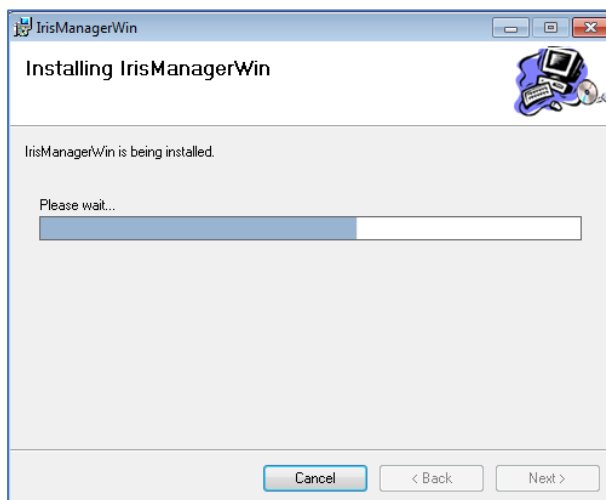
Press 'Next' button.



Select 'Everyone' option and press 'Next' button.



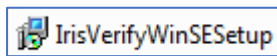
Press 'Next' button.



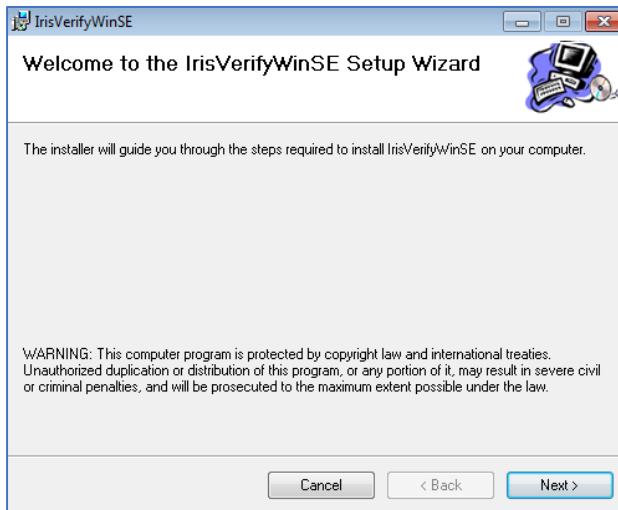
Here we completed installation process. Restart the PC.

IrisVerifyWinSE Installation on PC

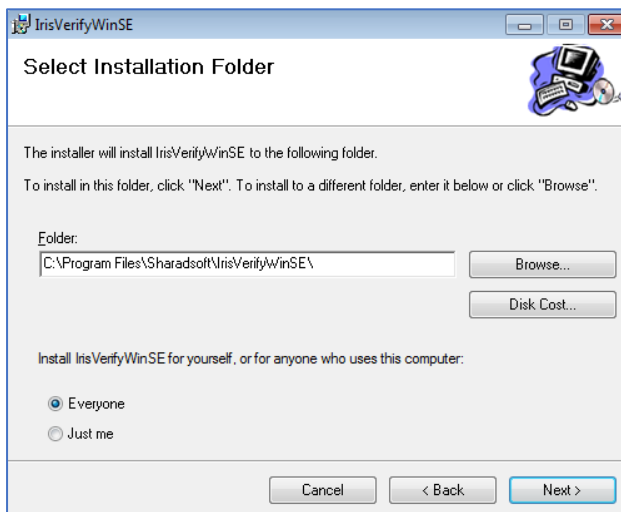
Double click on 'IrisVerifyWinSESetup'. It will initiate installation process.



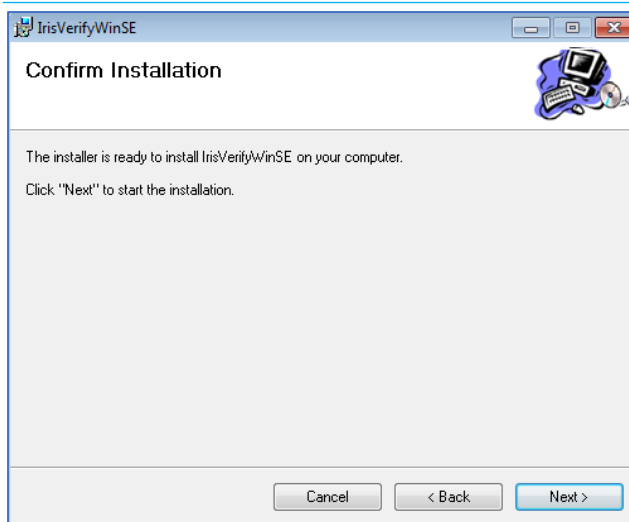
Follow the onscreen window to complete the installation process.



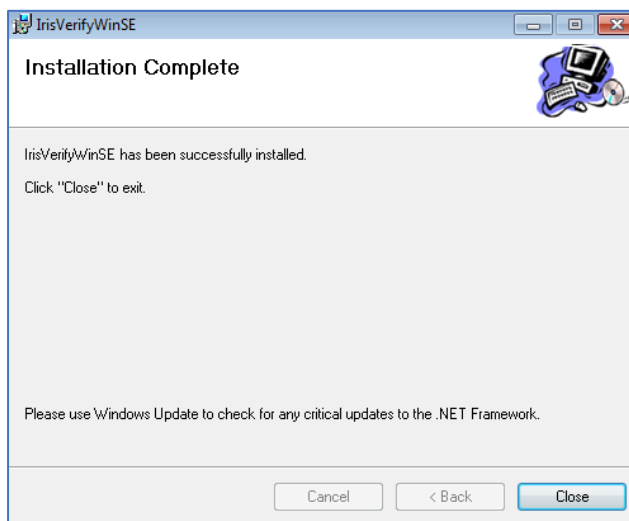
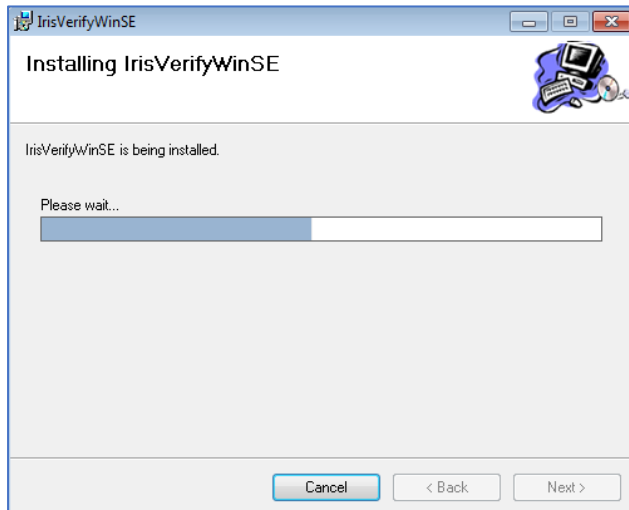
Press 'Next' button.



Select 'Everyone' option and press 'Next' button.



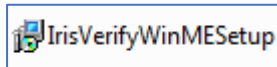
Press 'Next' button.



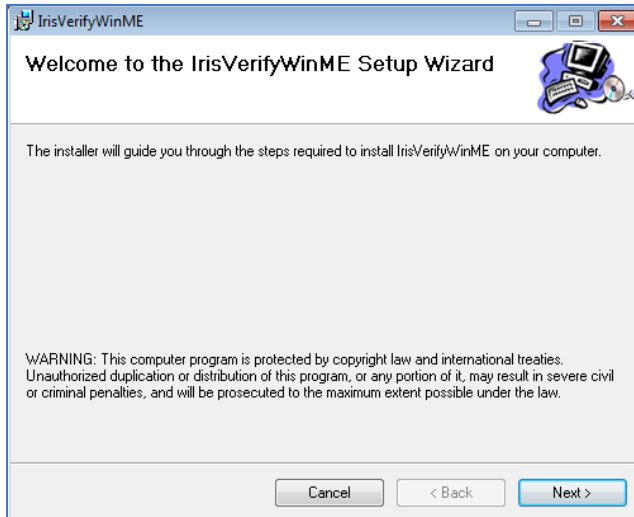
Here we completed installation process. Restart the PC.

IrisVerifyWinME Installation on PC

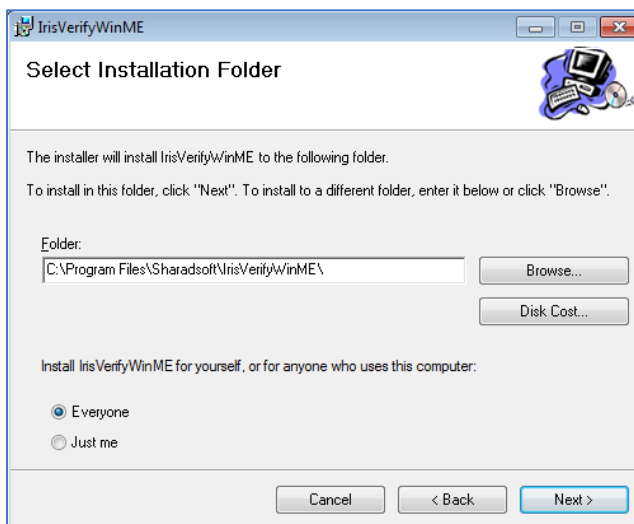
Double click on 'IrisVerifyWinMESetup'. It will initiate installation process.



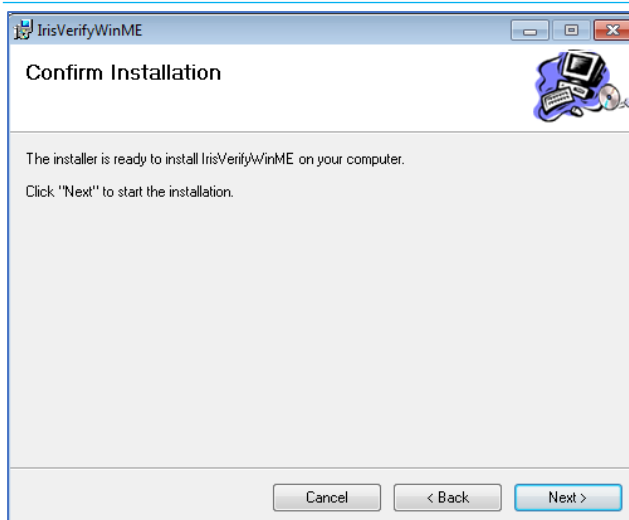
Follow the onscreen window to complete the installation process.



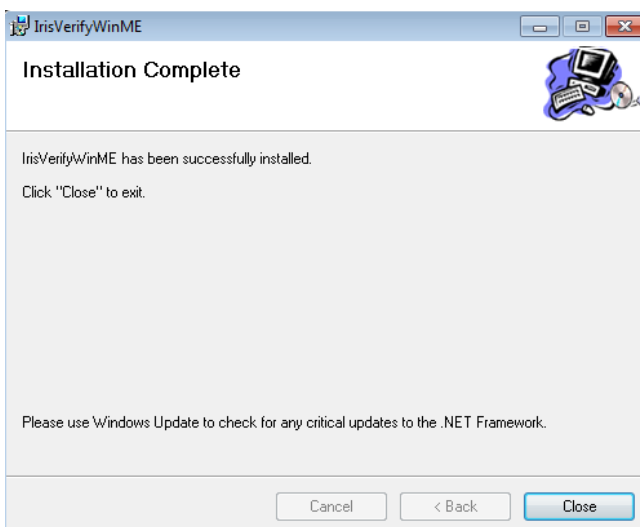
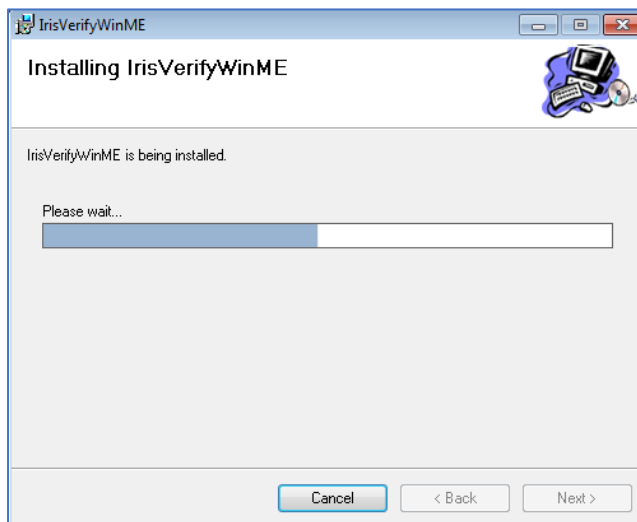
Press 'Next' button.



Select 'Everyone' option and press 'Next' button.



Press 'Next' button.



Here we completed installation process. Restart the PC.

Reference Manuals

WIN-IM001-EN	Installation Instruction Manual
WIN-CM001-EN	Configuration Manual
WIN-OM001-EN	Operational Manual
WIN-SA001-EN	Reference System Architecture

www.sharadsoft.com

Feedback/Support

Your comments will help us serve your iris authentication needs better. If you have any suggestions/support require, then drop the email on 'info@sharadsoft.com'.

Location: Mumbai, India.