



# Operational Manual

PanelView Plus based user iris enrolment & verification

PVP-OM001-EN

## Contents

Prerequisites .....	2
<i>Operating System</i> .....	2
<i>Database</i> .....	2
<i>Rockwell Software</i> .....	2
<i>Sharadsoft Software</i> .....	2
<i>Hardware</i> .....	2
Initial Steps.....	3
Iris Enrolment using Iris Manager at PanelView Plus Terminal .....	4
Iris Verification Operation at PanelView Plus Terminal.....	9
Reference Manuals .....	12

## Prerequisites

### *Operating System*

Workstation: Windows 7 Professional with Service Pack 1 (64 bit)

### *Database*

SQL Compact Edition (Version 3.5)

### *Rockwell Software*

FactoryTalk View Studio (Version 10)

### *Sharadsoft Software*

IrisManagerWinCE: For Iris Enrollment of PVP-based user

IrisVerifyWinCE: Iris verification on PanelView Plus 7 Performance

### *Hardware*

PanelView Plus 7 Performance Display

Iritech, Irishield series MK2120UL (Monocular)

<http://www.irittech.com/products/hardware/irishield%E2%84%A2-series>

## Initial Steps

1. First refer and follow Installation Instruction Manual (PVP-IM001-EN.pdf)
2. Ensure System architecture is like reference system architecture (PVP-SA001-EN.pdf)
3. Refer Configuration Manual (PVP-CM001-EN.pdf) before proceeding to verification operation

## Iris Enrolment using Iris Manager at PanelView Plus Terminal

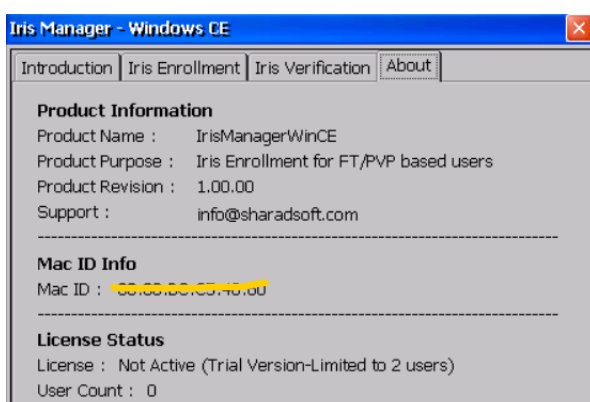
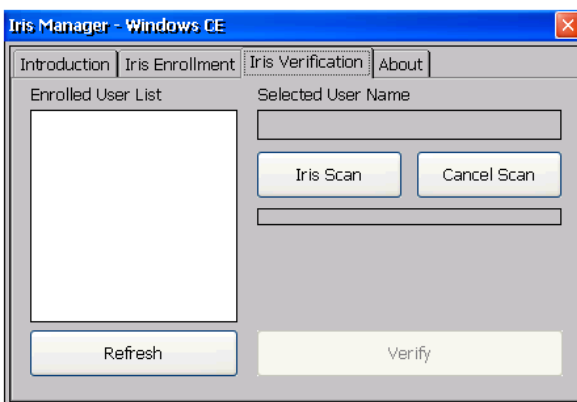
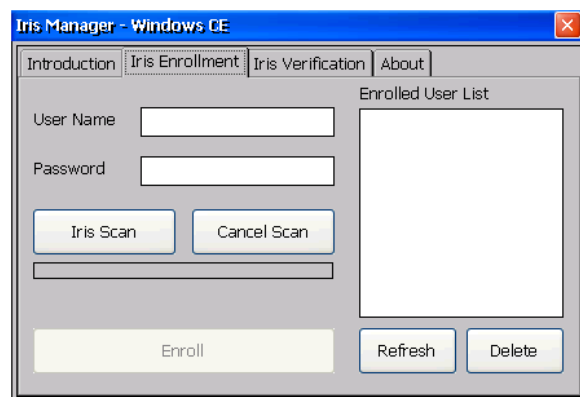
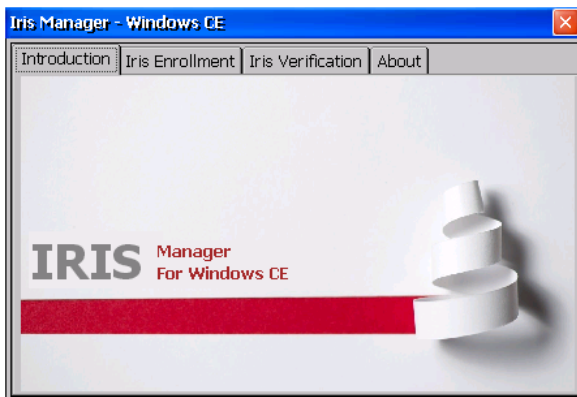
Startup screen of the PVP terminal as shown below.

Use 'Iris Enrollment' button for user iris enrolment.

Use 'Iris Login, button for user iris verification

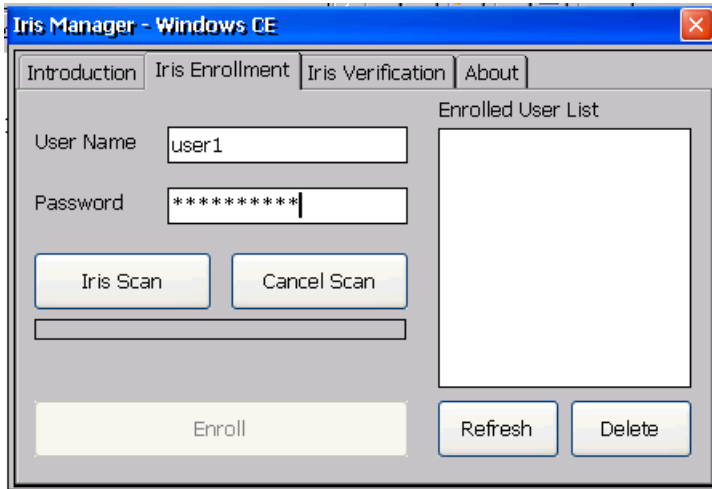


Overall look of Iris Manager application is as follows;

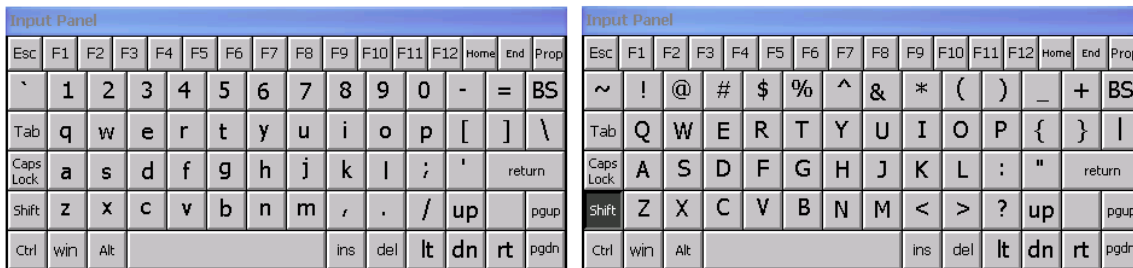


Step-by-step process for Iris enrolment as follows;

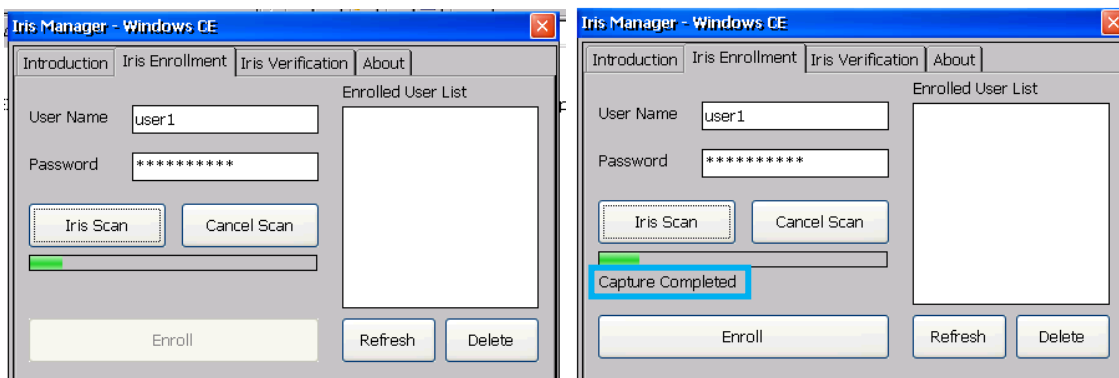
Step-1: Enter username & password for enrolment. Note that username & password should be same as configured in PVP runtime.



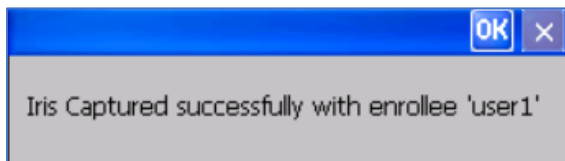
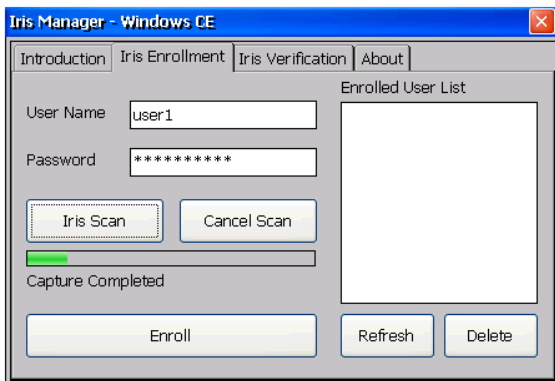
Large Keyboard looks as shown below.



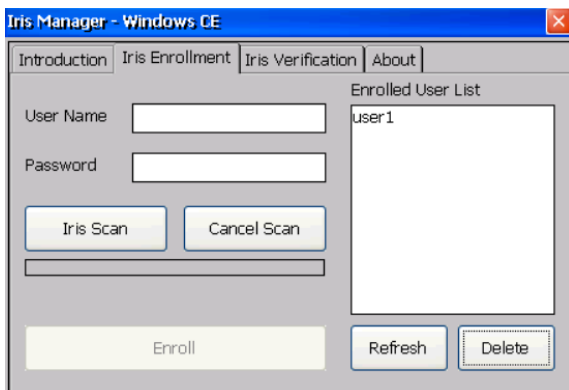
Step-2: Initiate Iris scan by pressing 'Iris Scan' button. hold iris scanner in-front of the eye approx. 10-15 cm away. Red light turns on indicates that iris scanner is ready to scan the eye. Once iris scanner found eye at proper distance from where it can be scan, blue light blink will be start i.e. iris scanner initiated to capture the eye image. Once blue light turns off it mean iris scan operation completed.



Step-3: Press 'Enroll' button to enrol the user with its iris data.



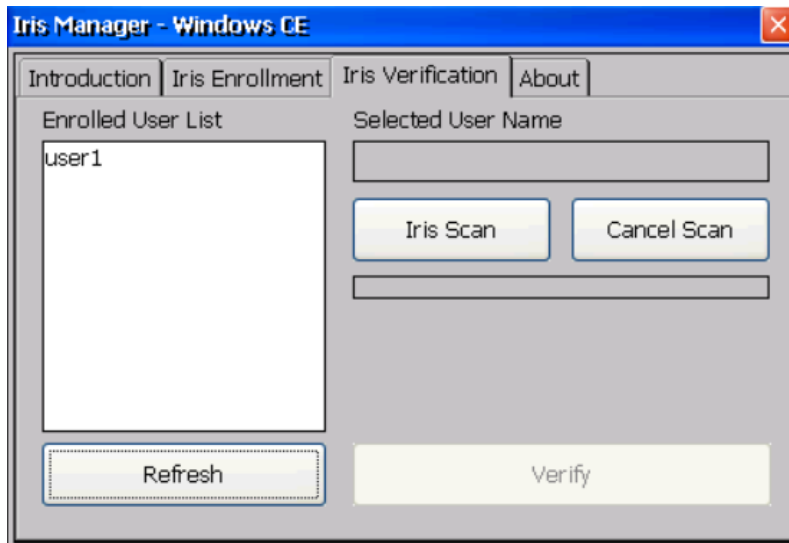
Enrolled username will get listed in user list.



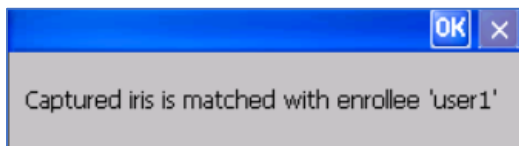
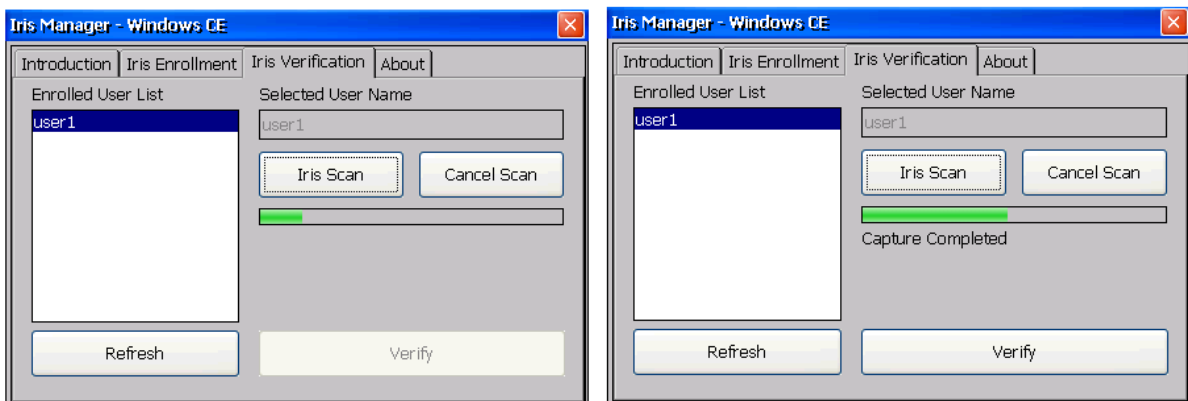


Step-by-step process for iris verification to cross verify of proper iris enrolment at Iris Manager application.

Step-1: Press 'Refresh Group List' button. It will populate group list.

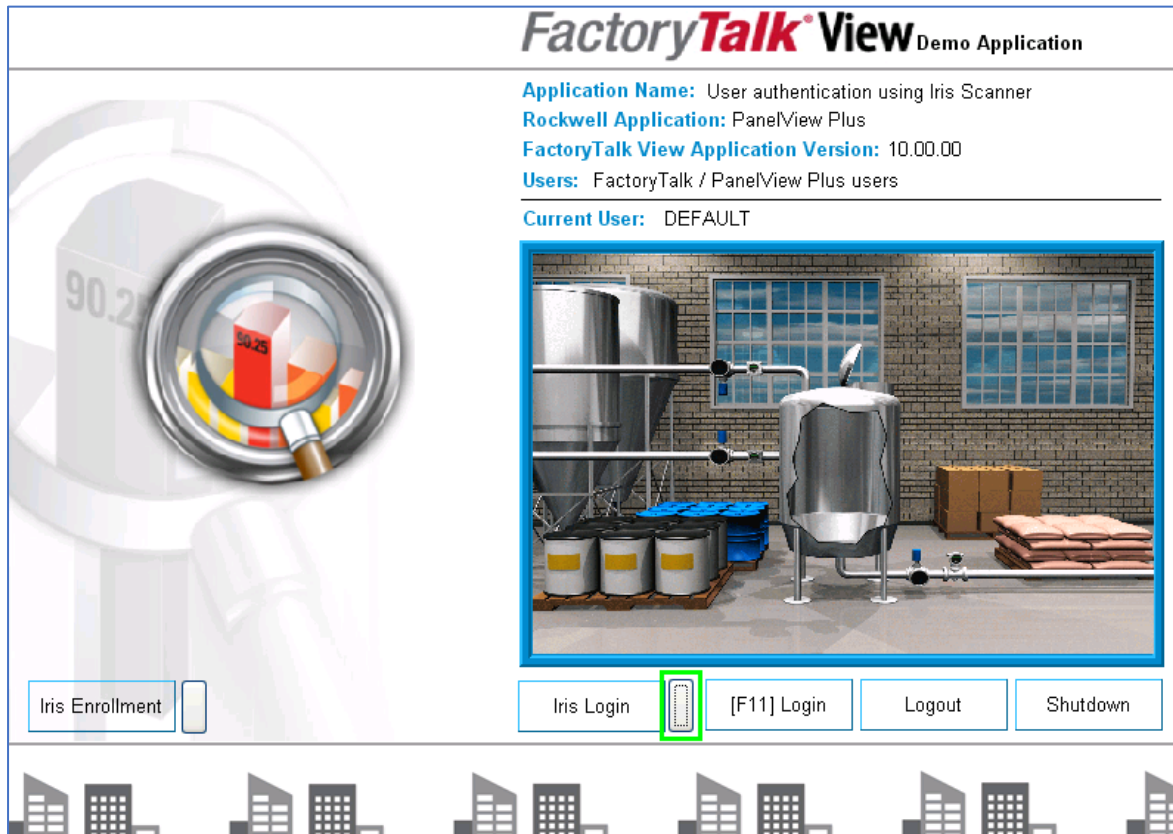


Step-2: Now select user from the user list and press scan button to initiate iris scan operation. After successful completion of iris scan process, press 'Verify' button. It will give result about whether current captured iris is matched with existing recorded iris or not.

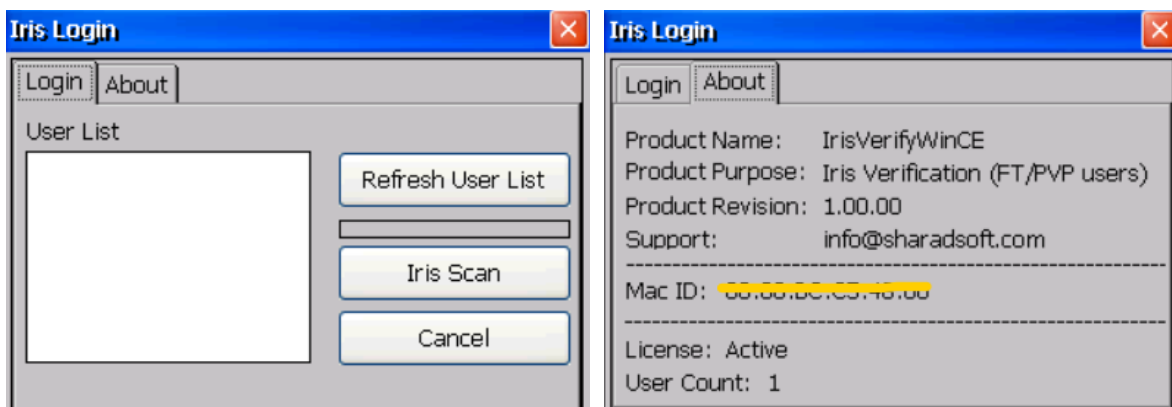


## Iris Verification Operation at PanelView Plus Terminal

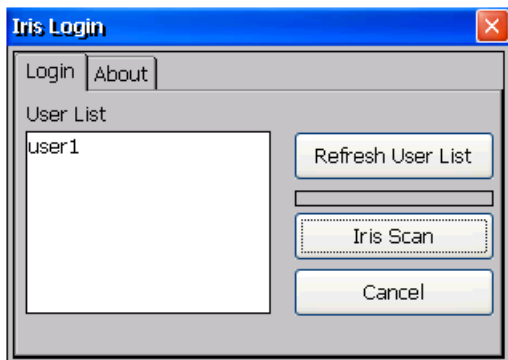
Start-up screen of the PanelView Plus is shown below. User shall press 'Iris Login' button to call iris verification app. 'Iris Login' button is the momentary push button and it is configured to trigger Iris verification app through Program launcher ActiveX.



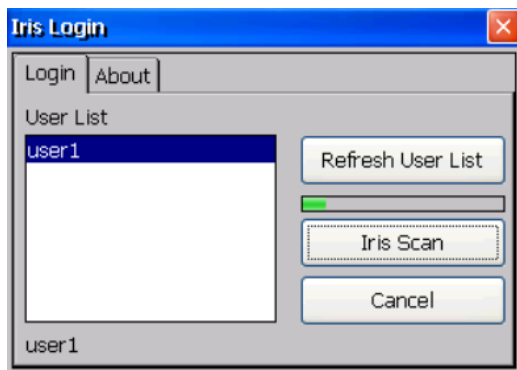
Overall look of the Iris verification app is shown below.



Iris verification app will pop up as shown below. Press 'Refresh Group' button. It will populate Group list which are associated with iris data.



Select user and press 'Iris Scan' button to initiate iris scan.



Progress bar above 'Iris scan' button indicates that allocated time for iris scan is running.

After successful match with iris data, user will get logged in to FTView application.



## Reference Manuals

PVP-IM001-EN	Installation Instruction Manual
PVP-CM001-EN	Configuration Manual
PVP-OM001-EN	Operational Manual
PVP-SA001-EN	Reference System Architecture

[www.sharadsoft.com](http://www.sharadsoft.com)

---

### Feedback/Support

Your comments will help us serve your iris authentication needs better. If you have any suggestions/support require, then drop the email on 'info@sharadsoft.com'.

Location: Mumbai, India.