



# Installation Instruction Manual

PanelView Plus based user iris enrolment & verification

PVP-IM001-EN

## Contents

Prerequisites .....	2
<i>Operating System</i> .....	2
<i>Database</i> .....	2
<i>Rockwell Software</i> .....	2
<i>Sharadsoft Software</i> .....	2
<i>Hardware</i> .....	2
Iris Driver Installation .....	3
<i>Hardware Connectivity</i> .....	3
<i>Iris Scanner driver installation on PVP</i> .....	3
<i>SQL Compact Edition installation on PVP</i> .....	8
Iris Software Installation .....	10
<i>IrisManagerWinCE Installation on PVP</i> .....	10
<i>IrisVerifyWinCE Installation on PVP</i> .....	11
Reference Manuals .....	12

## Prerequisites

### *Operating System*

Workstation: Windows 7 Professional with Service Pack 1 (64 bit)

### *Database*

SQL Compact Edition (Version 3.5)

### *Rockwell Software*

FactoryTalk View Studio (Version 10)

### *Sharadsoft Software*

IrisManagerWinCE: For Iris Enrollment of PVP-based user

IrisVerifyWinCE: Iris verification on PanelView Plus 7 Performance

### *Hardware*

PanelView Plus 7 Performance Display

Iritech, Irishield series MK2120UL (Monocular)

<http://www.irittech.com/products/hardware/irishield%E2%84%A2-series>

## Iris Driver Installation

### Hardware Connectivity



IriShield™-USB  
MK 2120U



Micro USB cable

Connect USB based Iris scanner (MK2120UL) to PC/PVP.

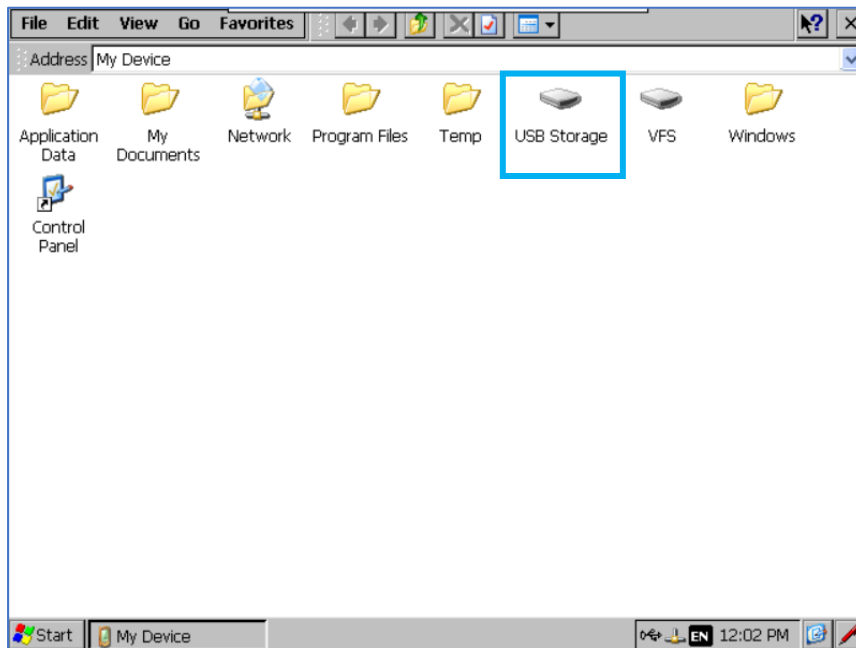
### Iris Scanner driver installation on PVP

Connect USB based Iris scanner (MK2120UL) to PVP7 Performance display and install its driver as follows;

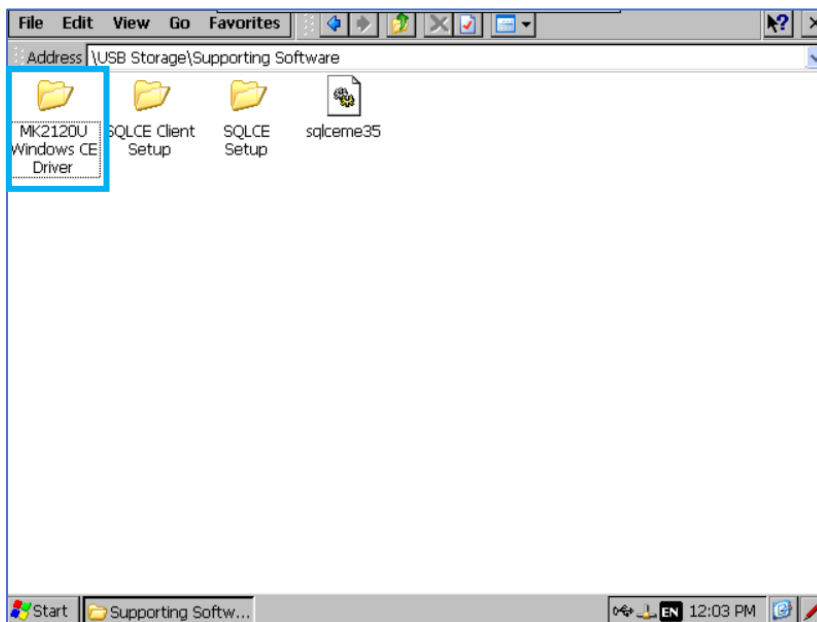
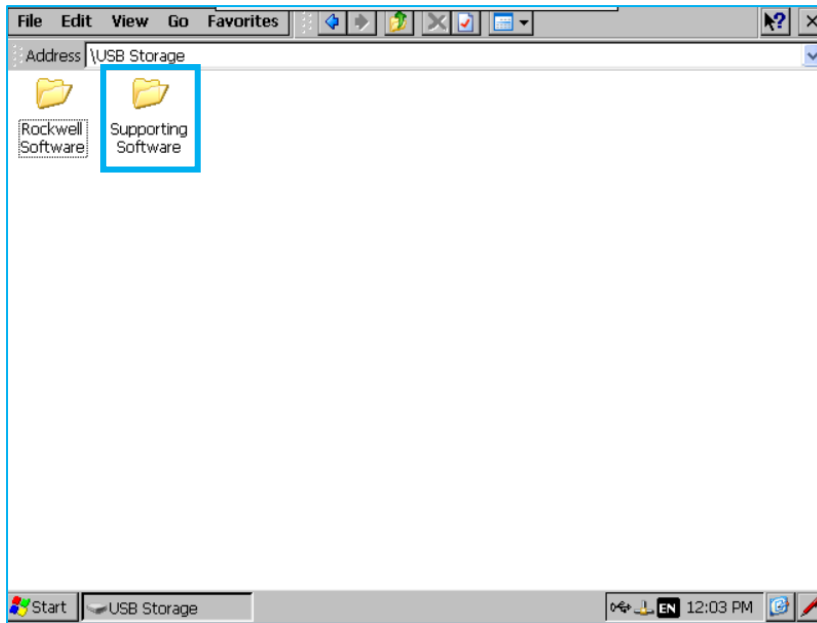
Step-1: Access windows environment of PVP & Enter 'My Device' option



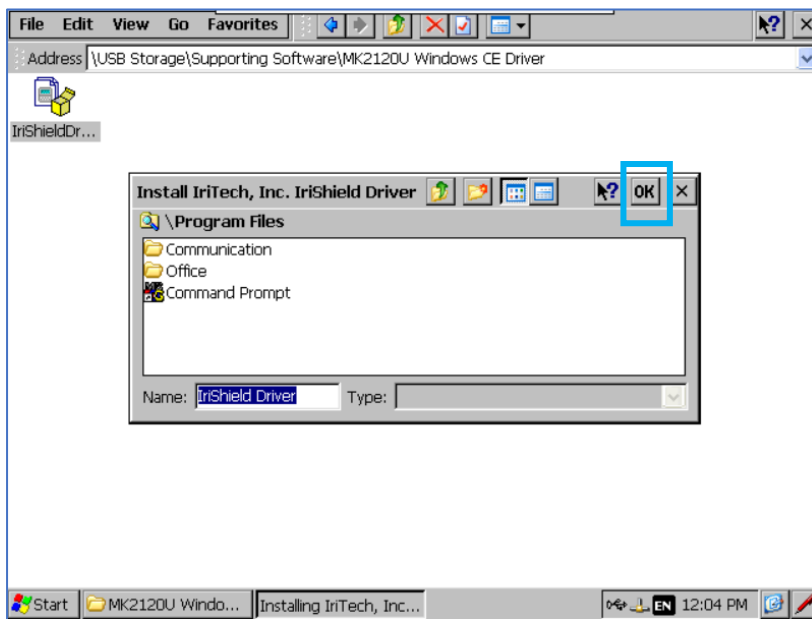
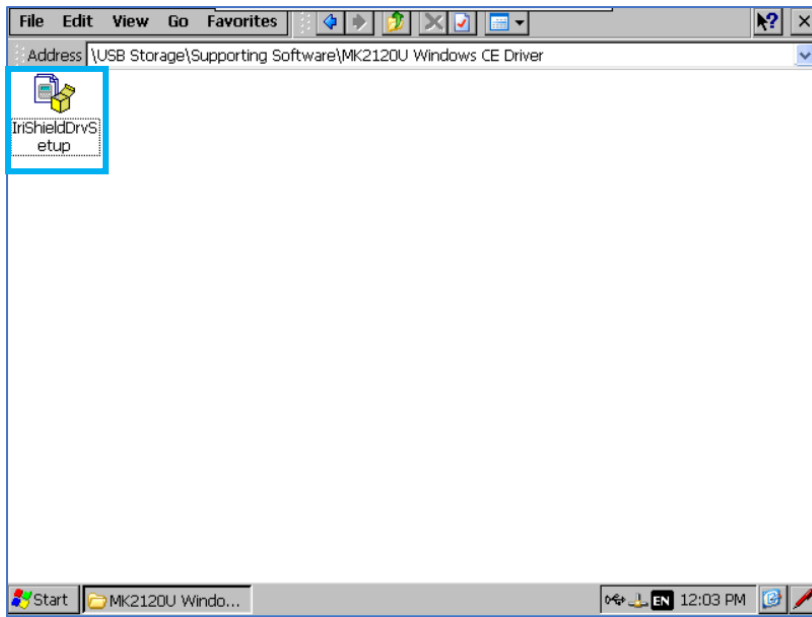
Step-2: Enter 'USB Storage' option where you have already copied supporting software require for Iris scanner.



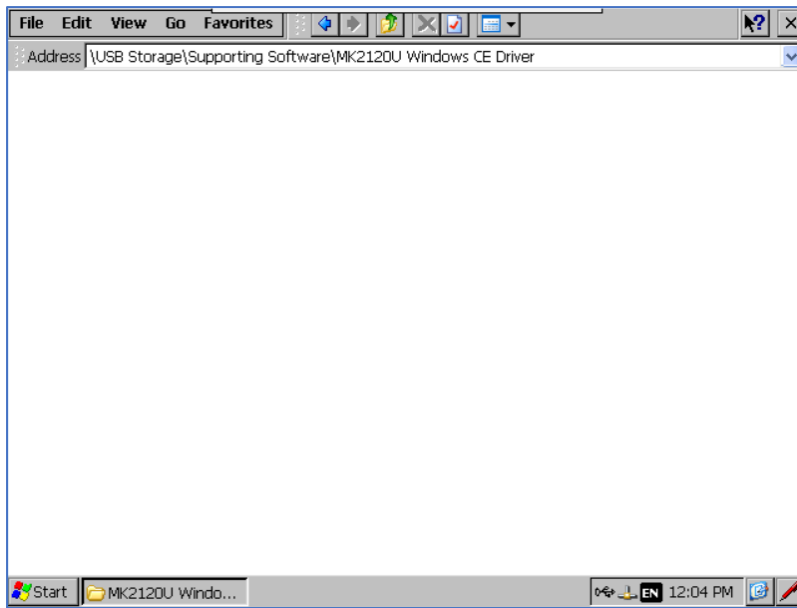
Step-3: Enter 'Supporting Software' and then 'MK2120U Windows CE Driver' folder.



Step-4: Run 'IriShieldDrvSetup' and press 'OK' with by default options on popup window



Step-5: Folder will become empty means driver installation work completed successfully.



Note: Iris scanner must be connected at Iris enrolment PC or at iris verification PC/PVP while driver installation.



---

*SQL Compact Edition installation on PVP*

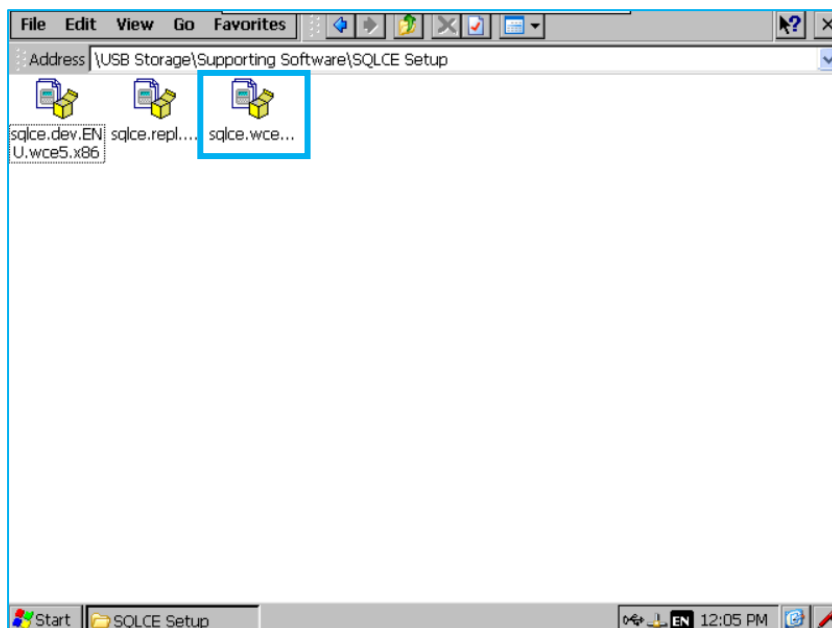
Step-1: Enter 'SQLCE Setup' folder.



Step-2: Double tap/click on all three setups (cab files) one by one and follow the on-screen instructions to complete the SQL CE setup on PVP.

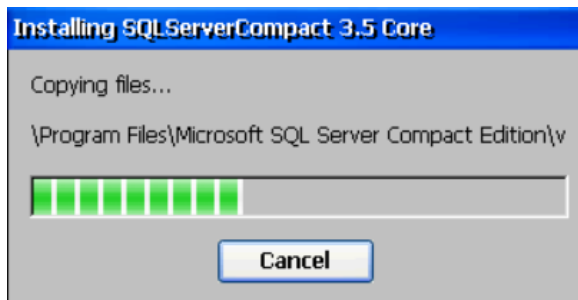
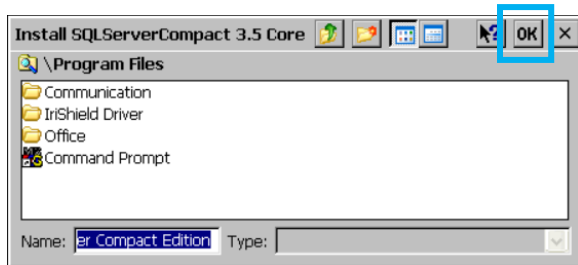
Sequence of setup as follows:

1. sqlce.wce5.x86.cab
2. sqlce.dev.ENU.wce5.x86.cab
3. sqlce.repl.wce5.x86.cab

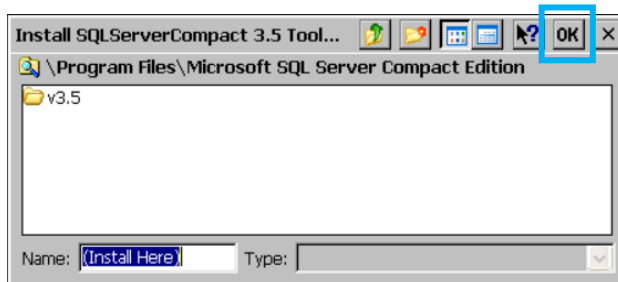


Note: Keep default options as it is.

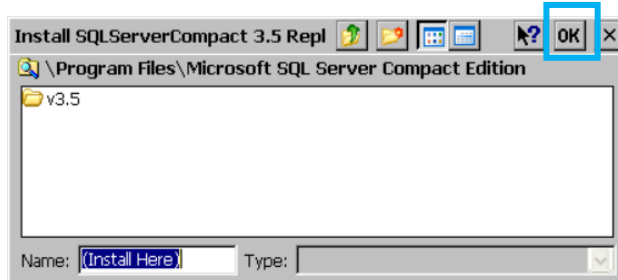
Step-2.1: Double tap on 'sqlce.wce5.x86.cab'



Step-2.2: Double tap on 'sqlce.dev.ENU.wce5.x86.cab'



Step-2.3: Double tap on 'sqlce.repl.wce5.x86.cab'



### Summary

Here we completed iris scanner driver installation & SQL CE installation on PanelView Plus device.

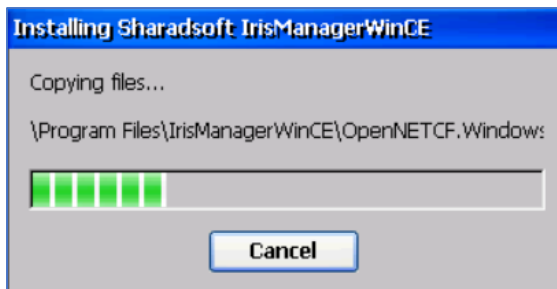
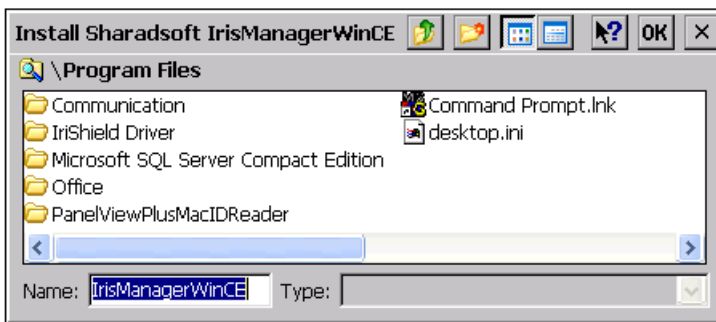
## Iris Software Installation

### *IrisManagerWinCE Installation on PVP*

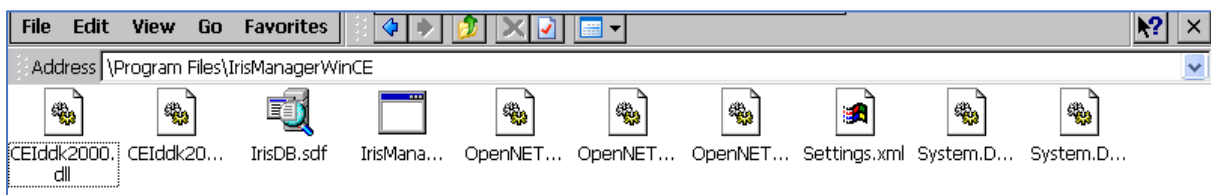
Double tap on 'IrisManagerWinCECab'. It will initiate installation process.



Press 'OK' button to proceed on installation process. Do not alter default installation location.



Default installation folder on PVP is as shown below.

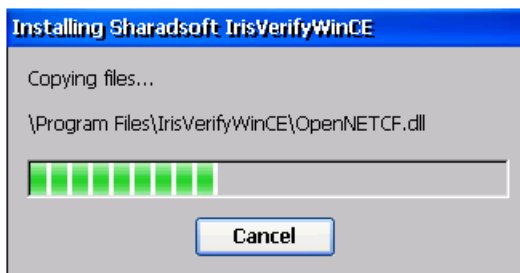
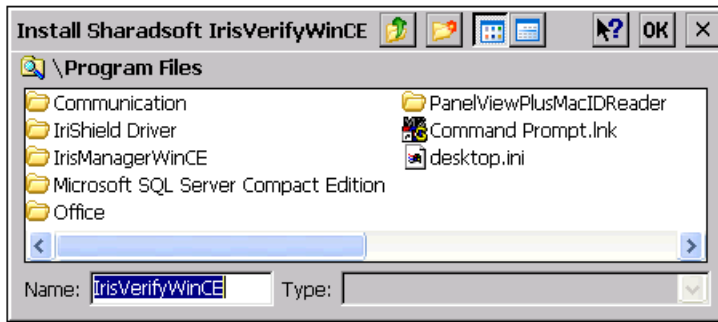


*IrisVerifyWinCE Installation on PVP*

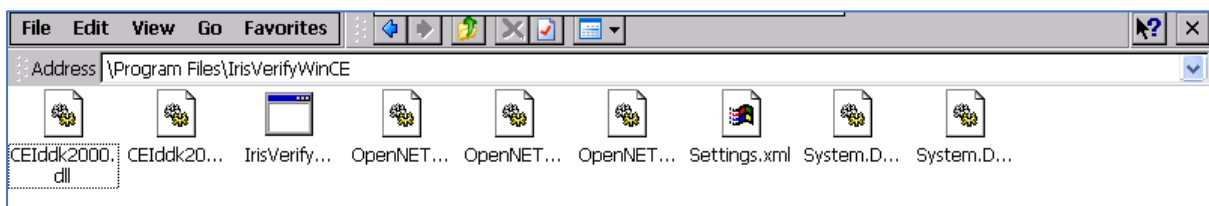
Double tap on 'IrisVerifyWinCECab'. It will initiate installation process on PVP.



Press 'OK' button to proceed on installation process. Do not alter default installation location.



Default installation folder on PVP is as shown below.



## Reference Manuals

PVP-IM001-EN	Installation Instruction Manual
PVP-CM001-EN	Configuration Manual
PVP-OM001-EN	Operational Manual
PVP-SA001-EN	Reference System Architecture

[www.sharadsoft.com](http://www.sharadsoft.com)

---

### Feedback/Support

Your comments will help us serve your iris authentication needs better. If you have any suggestions/support require, then drop the email on 'info@sharadsoft.com'.

Location: Mumbai, India.