



# Configuration Manual

PanelView Plus based user iris enrolment & verification

PVP-CM001-EN

## Contents

Prerequisites .....	2
<i>Operating System</i> .....	2
<i>Database</i> .....	2
<i>Rockwell Software</i> .....	2
<i>Sharadsoft Software</i> .....	2
<i>Hardware</i> .....	2
Initial Steps.....	3
Section1: Configuration for PanelView Plus .....	3
Configuration-IrisManagerWinCE .....	3
Configuration-IrisVerifyWinCE .....	4
Configuration-FTViewME application for PVP Terminal.....	5
Reference Manuals .....	10

## Prerequisites

### *Operating System*

Workstation: Windows 7 Professional with Service Pack 1 (64 bit)

### *Database*

SQL Compact Edition (Version 3.5)

### *Rockwell Software*

FactoryTalk View Studio (Version 10)

### *Sharadsoft Software*

IrisManagerWinCE: For Iris Enrollment of PVP-based user

IrisVerifyWinCE: Iris verification on PanelView Plus 7 Performance

### *Hardware*

PanelView Plus 7 Performance Display

Iritech, Irishield series MK2120UL (Monocular)

<http://www.irittech.com/products/hardware/irishield%E2%84%A2-series>

## Initial Steps

1. First refer and follow Installation Instruction Manual (PVP-IM001-EN.pdf)
2. Ensure System architecture is like reference system architecture (PVP-SA001-EN.pdf)

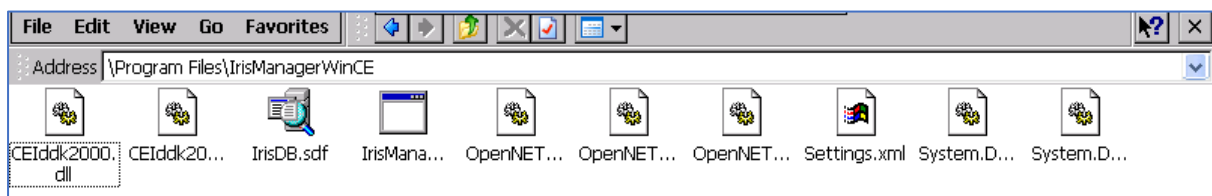
## Section1: Configuration for PanelView Plus

### Configuration-IrisManagerWinCE

Access Desktop mode of PVP and double tap on 'My Device' icon.

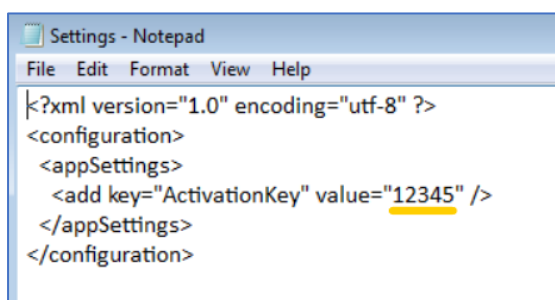


Navigate to 'Program Files\IrisManagerWinCE\' folder



Copy 'Settings.xml' file to external media like USB device and take it to regular PC for editing purpose. We required to set the parameter as per application requirement.

On regular pc open it using Notepad application.



After editing, save the file and copy it back to PVP terminal on its default location.

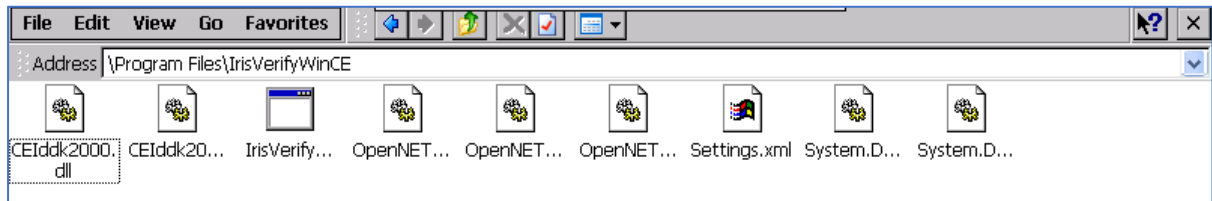
---

## Configuration-IrisVerifyWinCE

Access Desktop mode of PVP and double tap on 'My Device' icon.

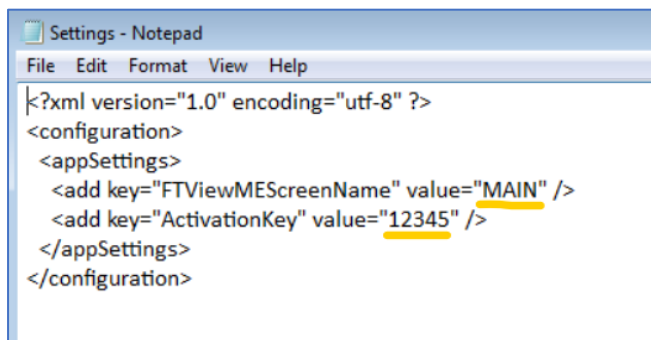


Navigate to 'Program Files\IrisVerifyWinCE\' folder



Copy 'Settings.xml' file to external media like USB device and take it to regular PC for editing purpose. We required to set the parameter as per application requirement.

On regular pc open it using Notepad application.

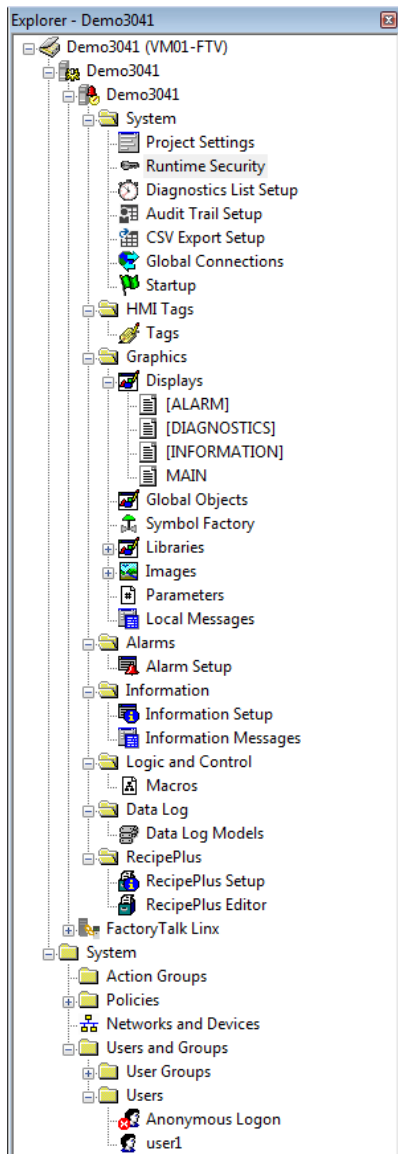


After editing, save the file and copy it back to PVP terminal on its default location.

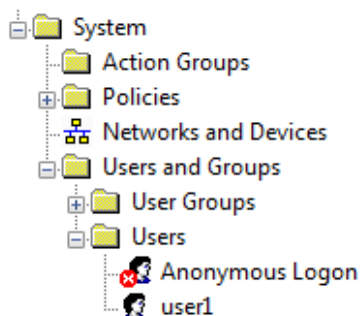
---

Configuration-FTViewME application for PVP Terminal

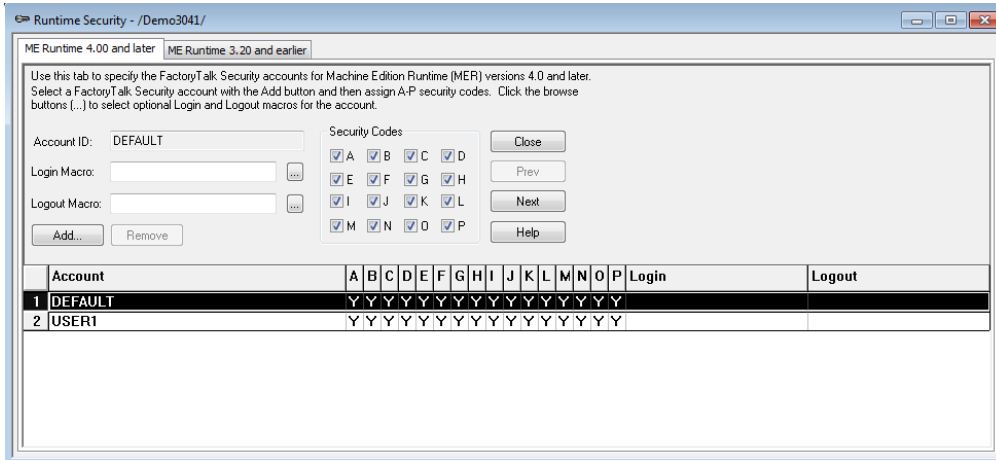
Overall tree structure of FTView ME application for PVP is as follows;



Add users/groups. Note that you need to enrol same username & same password while using IrisManagerWinCE on PVP. For this sample application we configured 'user1'.



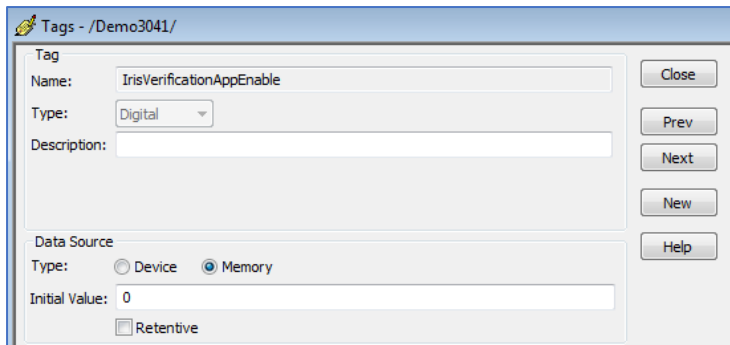
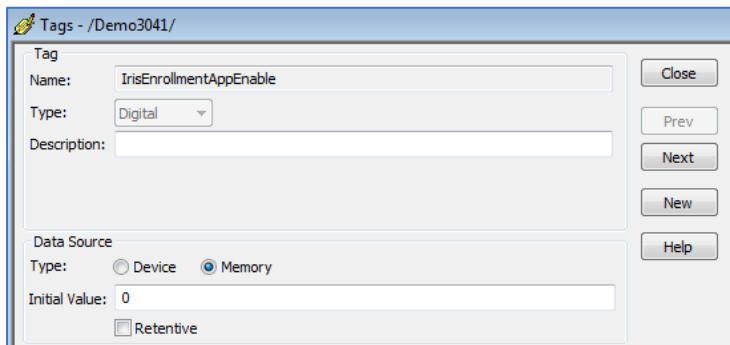
Add users/groups to runtime security. Assign security letters as per your requirement.



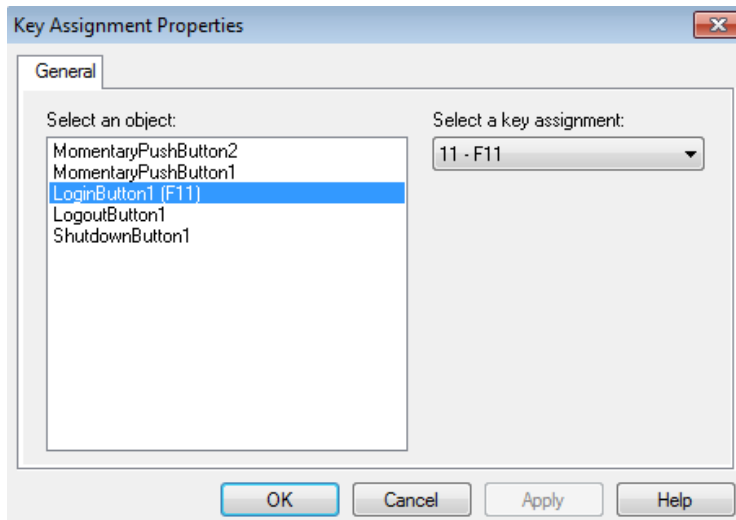
Here we have used only one screen 'MAIN' for our sample application. You can create separate screen like SE application development. Kindly note that you need to define screen name in 'IrisVerifyWinCE.exe.config' file while iris app configuration.



Create one digital memory tag 'IrisEnrollmentAppEnable & IrisVerificationAppEnable'. We are going to use this tag for triggering Iris app executable file while runtime.

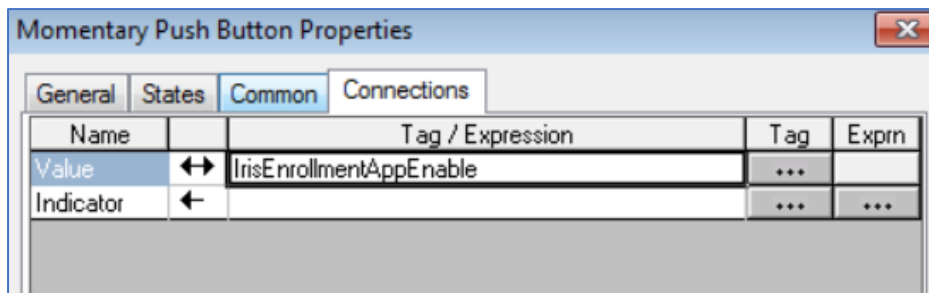


Assign 'F11' to Login button.

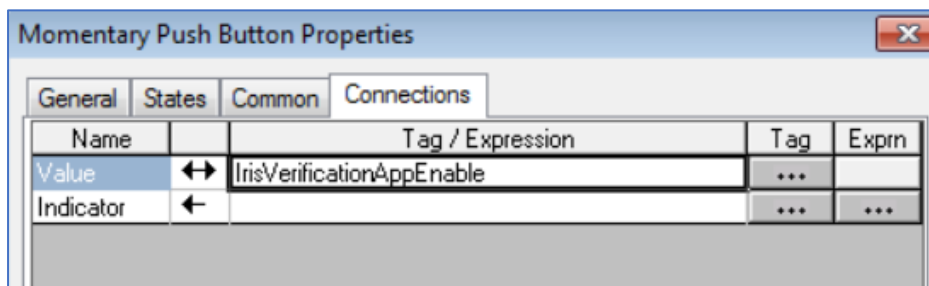




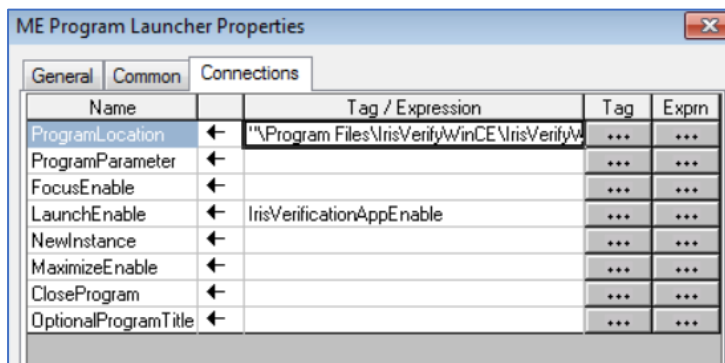
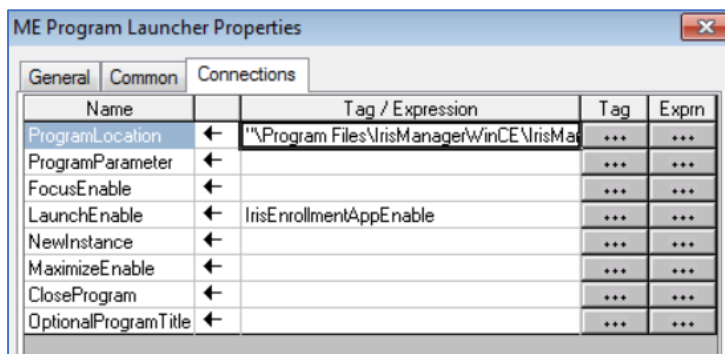
Configure 'Iris Enrolment' button properties as follows;



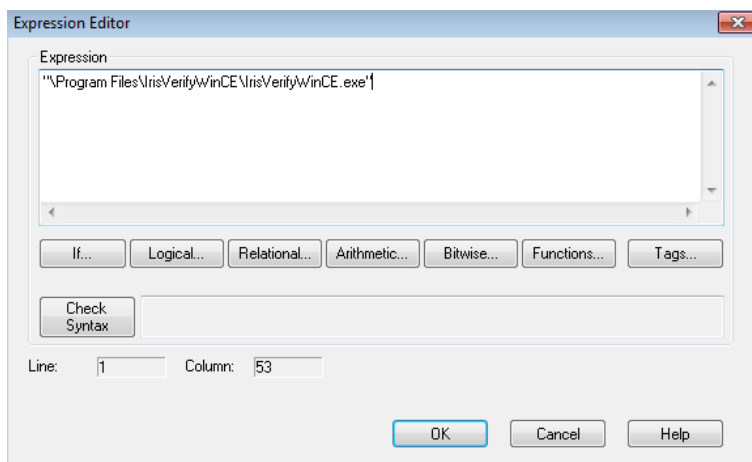
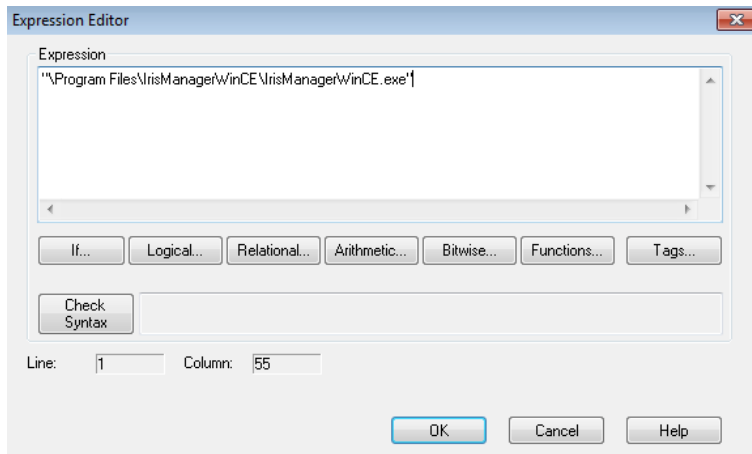
Configure 'Iris Login' button properties as follows;



Use 'ME Program Launcher' ActiveX to call Iris app while runtime. Define Program location and assign trigger tag.



Default program location is as follows;



Now you are ready to create runtime file for PanelView Plus terminal.

## Reference Manuals

PVP-IM001-EN	Installation Instruction Manual
PVP-CM001-EN	Configuration Manual
PVP-OM001-EN	Operational Manual
PVP-SA001-EN	Reference System Architecture

[www.sharadsoft.com](http://www.sharadsoft.com)

---

### Feedback/Support

Your comments will help us serve your iris authentication needs better. If you have any suggestions/support require, then drop the email on 'info@sharadsoft.com'.

Location: Mumbai, India.