



Operational Manual

PanelView Plus based Batch Report

PVP-PRINT-OM001-EN

Contents

Prerequisites	2
<i>Operating System</i>	2
<i>Database</i>	2
<i>Rockwell Software</i>	2
<i>Sharadsoft Software</i>	2
<i>Hardware</i>	2
Initial Steps.....	3
Batch Report through PanelView Plus Terminal.....	4
Sequence of operation before batch report retrieval	4
Batch report retrieval.....	8
Reference Manuals	12

Prerequisites

Operating System

Workstation: Windows 7 Professional with Service Pack 1 (64 bit)

Database

SQL Compact Edition (Version 3.5)

Rockwell Software

FactoryTalk View Studio (Version 10)

Sharadsoft Software

BatchReportME: For Batch report through PanelView Plus Terminal

Hardware

PanelView Plus 7 Performance Display

Network/USB based printer (PCL5 Compatible)

Note: We have tested above application on HP make LaserJet Pro M403n

Initial Steps

1. First refer and follow Installation Instruction Manual (PVP-PRINT-IM001-EN.pdf)
2. Ensure System architecture is like reference system architecture (PVP-PRINT-SA001-EN.pdf)
3. Refer Configuration Manual (PVP-PRINT-CM001-EN.pdf) before proceeding for Batch report

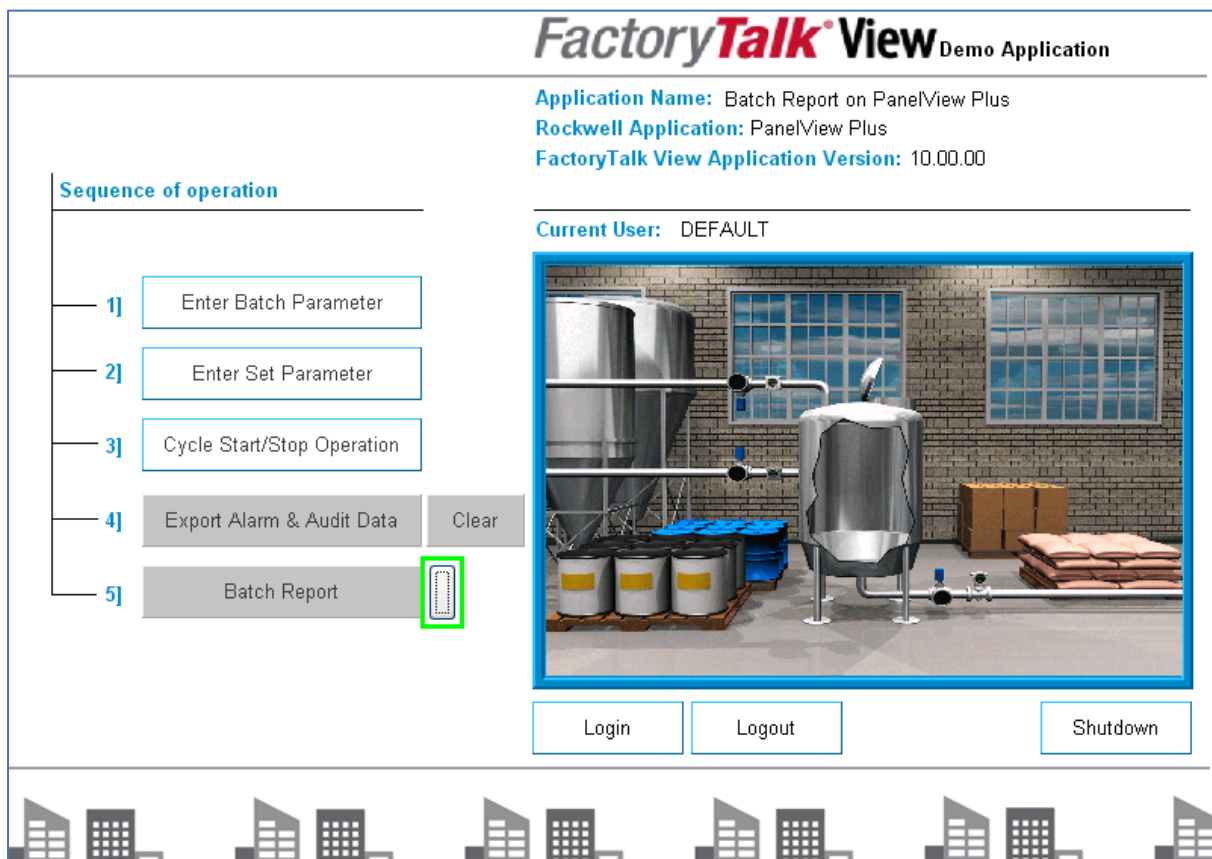
Batch Report through PanelView Plus Terminal

Sequence of operation before batch report retrieval

Start-up screen of the PVP terminal as shown below.

Press 'Login' button and enter valid/configured username and password.

Follow the sequence of operation as shown on the screen. It will ensure successful batch report generation.



Enter Batch Parameter button: To enter batch details before initiating batch

Enter Set Parameter button: To set the parameters before initiating batch

Cycle Start/Stop Operation button: To carry out batch operation

Export Alarm/Audit Data button: To export Alarm & Audit data after batch end (It will export data from proprietary database to CSV on Panelview Plus terminal itself)

Clear button: To clear Alarm & Audit data after export

Batch Report: To call 'Batch Report ME' application

Step-1: Enter Batch Parameters

Parameter	Value	Type
Location	Mumbai	String
Department	Production	String
Equipment Name	Equipment1	String
Equipment Code	E001	String
Product Name	P001	String
Batch Number	B001	String
Run Number	1	Numeric

Run number must be incremental for each cycle/run. You can achieve it using PLC logic or correct manual entry. Report will fail for that specific run number if it has introduced two times.

Information: Run number is the number assigned for each production cycle for identity purpose. There may be more than one Run numbers/cycles for single batch number. Run number will increment from first cycle of that machine to further cycles i.e. there will be no reset for run number. Run number must be numeric.

Step-2: Enter Set Parameters

Parameter	Value	Unit	Type
Parameter 1	0.00	Deg.C	Numeric
Parameter 2	0.00	Amp	Numeric
Parameter 3	0.00	Ltr.	Numeric
Parameter 4	0.00	Kg.	Numeric
Parameter 5	0.00	min.	Numeric
Parameter 6	0.00	rpm	Numeric

Here user can set the parameters as per cycle requirements. Note that present 'Batch Report ME' software is developed for numeric set points only.

Step-3: Cycle operation

Note that above screen objects are developed to test cycle operation (without use of PLC) for demo purpose only.

For demo cycle testing, follow the below steps:

1. Enter Running values (1st entry box is decimal based entry and 2nd entry box is without decimal)
2. Press 'Cycle Start' button. It will log Batch info.
3. Press 'Cycle Off' button. It will initiate to log running values on set interval.
4. Press setpoints number one-by-one with '0' button in-between two set-points. i.e. button press sequence as follows;



.... So, on. At the end press 'Clear'

- button. '0' button is used to trigger the setpoint log.
5. Press Events button in sequence as shown in screen. It will log events one-by-one. At the end press 'Clear event' button.
6. Now press 'Alarm1' button. It will pop-up alarm message. Acknowledge message. Follow same steps for 'Alarm2'.
7. Now enter set parameters. User need to enter comment while changing set parameters. Note that 'default' user can not change set parameters and comment must be small and without comma (,).
8. Release 'Cycle off' button.
9. Now press 'Cycle Stop' button. It will log cycle end timestamp.

Step-4: Export Alarm & Audit data



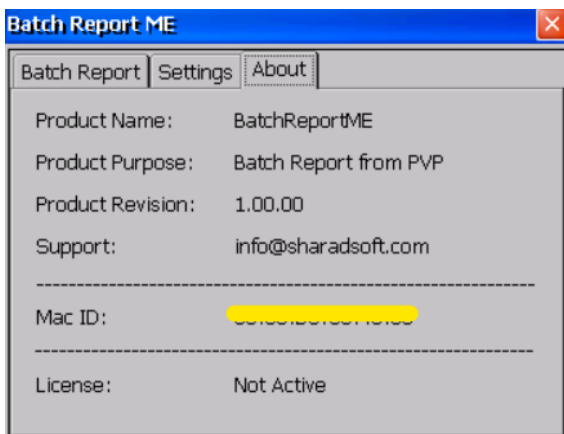
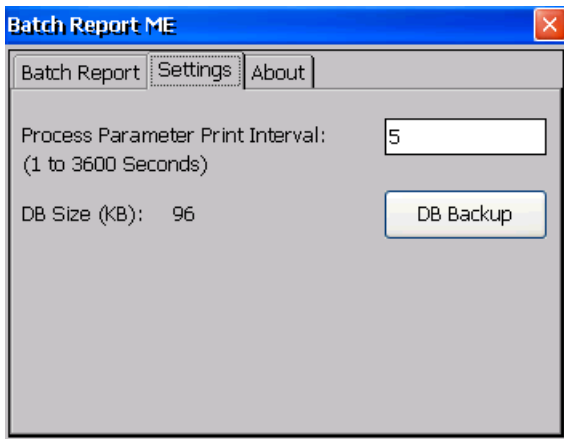
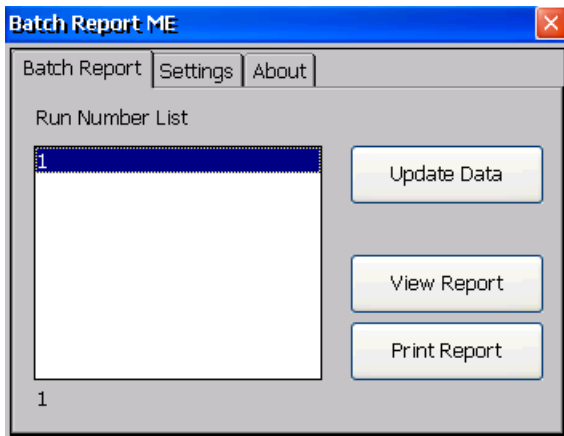
Press 'Export Alarm & Audit Data' button and after few seconds press same button again to release it. It will export Alarm & Audit data from proprietary data to CSV file on PVP terminal itself.

Now press 'Clear' button and after few seconds press same button to release it. It will clear the history from proprietary database.

Step-5: Call 'Batch Report ME' application to retrieve batch report.

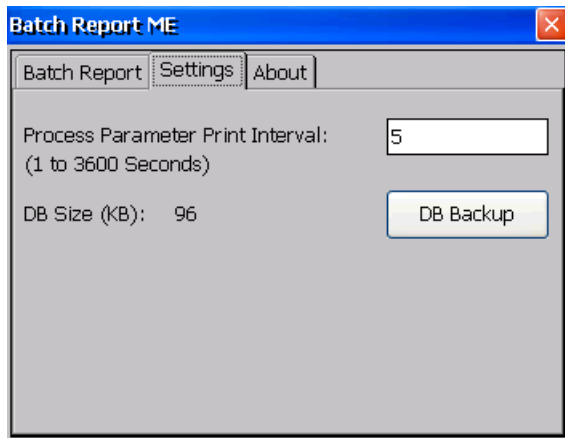
Batch report retrieval

Overall look of 'Batch Report ME' application is as follows;



Step-by-step process for Batch report retrieval as follows;

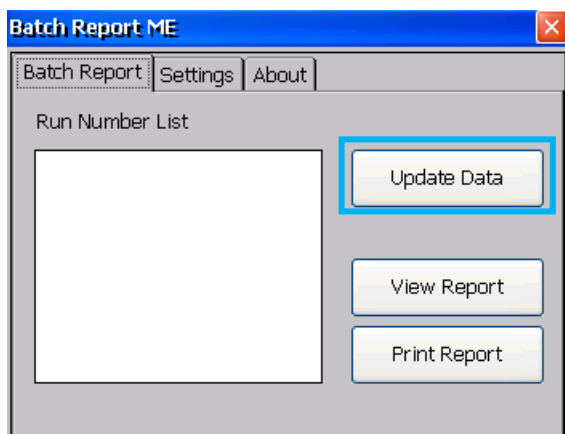
Step-1: Enter process parameter print interval (range 1 to 3600 seconds) before initiating batch report print/view. Note that failure to do so, it will take 5 seconds by default.



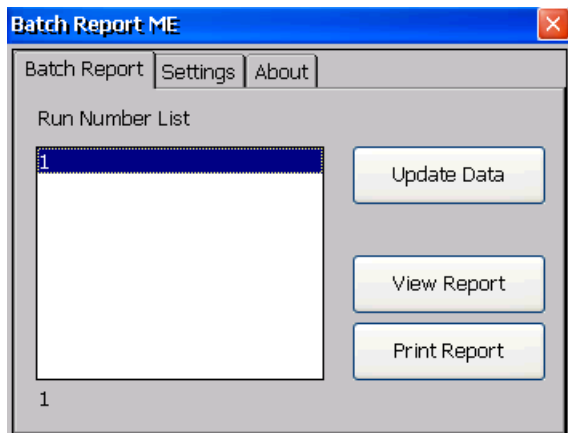
Large Keyboard looks as shown below while numeric entry.



Step-2: Press 'Update Data' button to synchronise csv data with Report database.

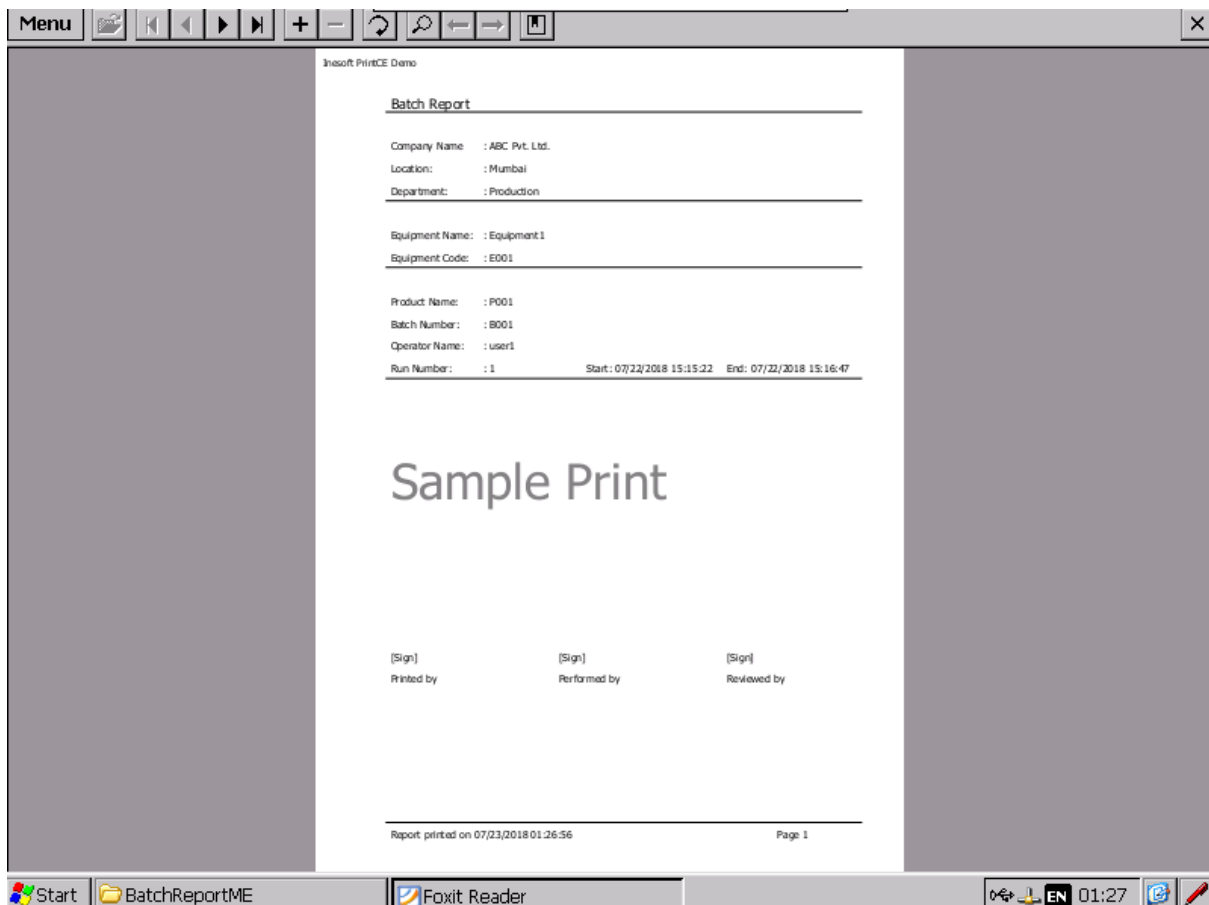


Step-3: Once synchronisation gets complete at back-end, Run number list will get populate. Select the Run number and press 'View Report' to view the report or press 'Print Report' to get physical print on connected printer.

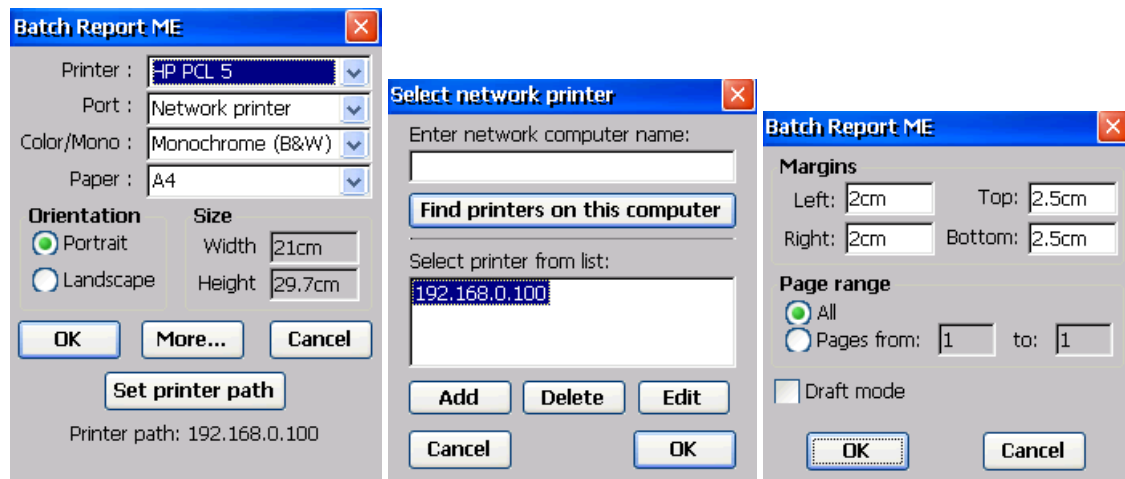


Once you press 'View Report' button, it will take few seconds to generate the report and then report will pop-up in pdf format. For physical print, you need to opt 'Print Report' button since pdf view has no print option.

Sample pdf view of batch report is as shown below;



Printer selection windows for reference purpose only:



Reference Manuals

PVP-PRINT-IM001-EN	Installation Instruction Manual
PVP-PRINT-CM001-EN	Configuration Manual
PVP-PRINT-OM001-EN	Operational Manual
PVP-PRINT-SA001-EN	Reference System Architecture

www.sharadsoft.com

Feedback/Support

Your comments will help us serve your iris authentication needs better. If you have any suggestions/support require, then drop the email on 'info@sharadsoft.com'.

Location: Mumbai, India.