



Installation Instruction Manual

PanelView Plus based Batch Report

PVP-PRINT-IM001-EN



Contents

Prerequisites	2
<i>Operating System</i>	2
<i>Database</i>	2
<i>Rockwell Software</i>	2
<i>Sharadsoft Software</i>	2
<i>Hardware</i>	2
Installation	3
<i>Hardware Connectivity</i>	3
<i>Printer installation on PVP</i>	3
<i>SQL Compact Edition installation on PVP</i>	4
<i>BatchReportME Installation on PVP</i>	6
Reference Manuals	7

Prerequisites

Operating System

Workstation: Windows 7 Professional with Service Pack 1 (64 bit)

Database

SQL Compact Edition (Version 3.5)

Rockwell Software

FactoryTalk View Studio (Version 10)

Sharadsoft Software

BatchReportME: For Batch report through PanelView Plus Terminal

Hardware

PanelView Plus 7 Performance Display

Network/USB based printer (PCL5 Compatible)

Note: We have tested above application on HP make LaserJet Pro M403n

Installation

Hardware Connectivity

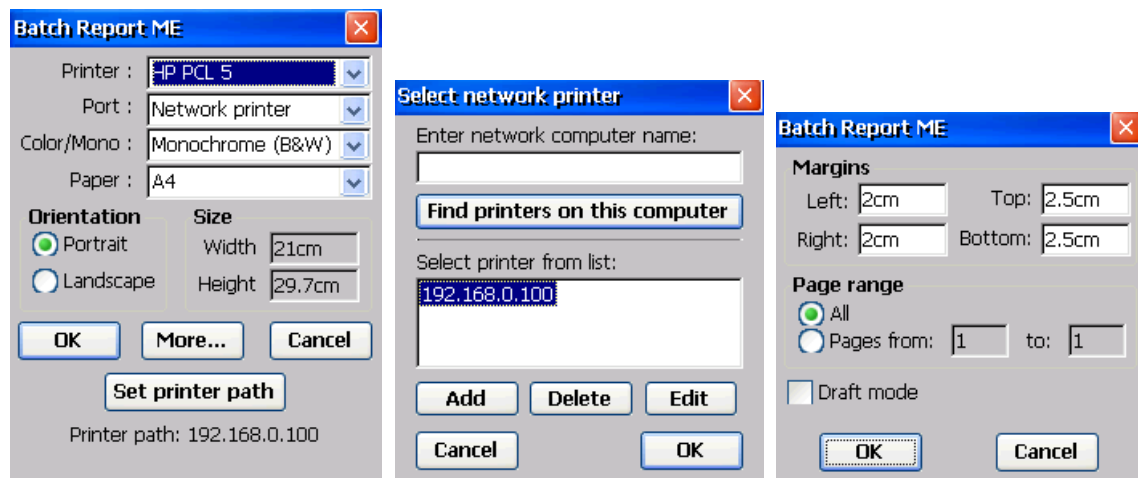


Connect Network/USB printer (PCL 5 compatible) to PanelView Plus terminal.

Printer installation on PVP

Set IP address of the Printer (for Network Printer) in same IP series as of the PanelView Plus. Connect Ethernet/LAN cable in between Printer & PVP terminal. Separate driver installation is not required here.

Reference snap of printer window while printing through 'Batch Report ME' software as follows;



Note: Margin is already set through internal code.

Other settings should be as follows;

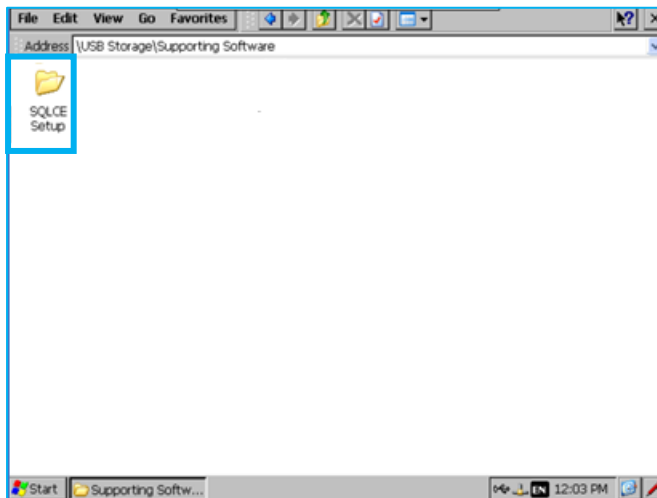
Orientation: Portrait

Paper: A4

Page range: All

SQL Compact Edition installation on PVP

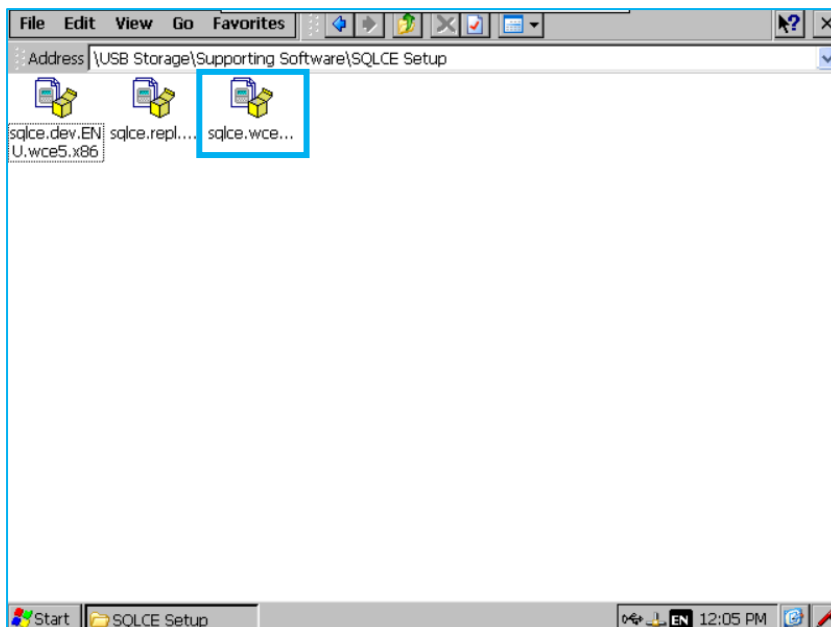
Step-1: Enter 'SQLCE Setup' folder.



Step-2: Double tap/click on all three setups (cab files) one by one and follow the on-screen instructions to complete the SQL CE setup on PVP.

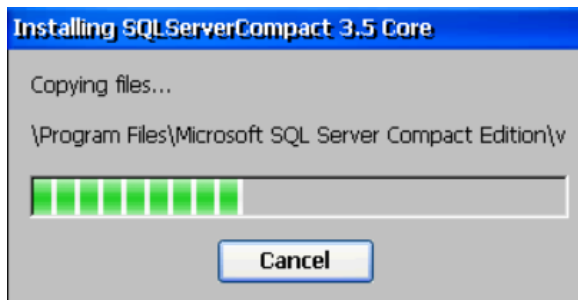
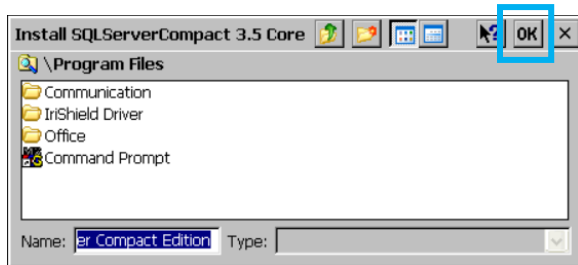
Sequence of setup as follows:

1. sqlce.wce5.x86.cab
2. sqlce.dev.ENU.wce5.x86.cab
3. sqlce.repl.wce5.x86.cab

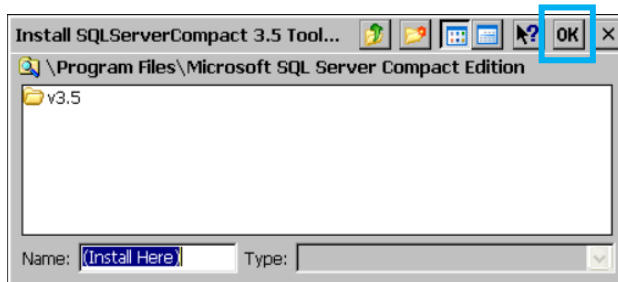


Note: Keep default options as it is.

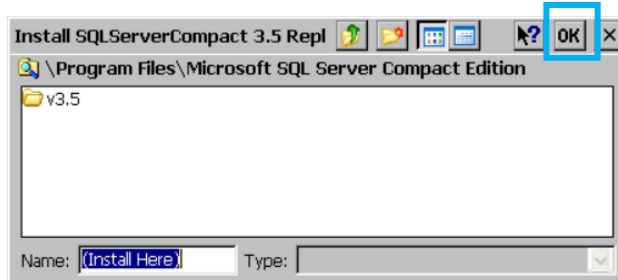
Step-2.1: Double tap on 'sqlce.wce5.x86.cab'



Step-2.2: Double tap on 'sqlce.dev.ENU.wce5.x86.cab'



Step-2.3: Double tap on 'sqlce.repl.wce5.x86.cab'



Summary

Here we completed printer configuration & SQL CE installation on PanelView Plus device.

BatchReportME Installation on PVP

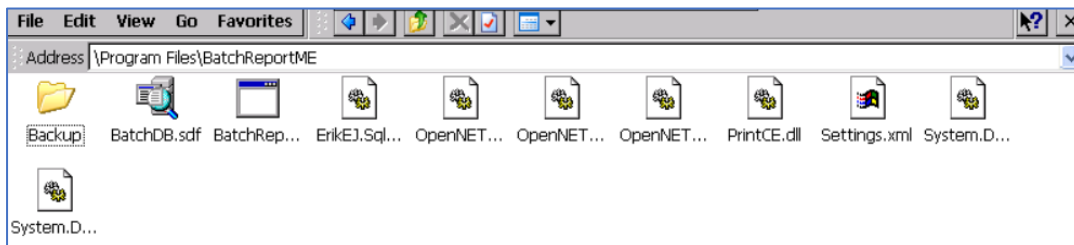
Double tap on 'BatchReportMECab'. It will initiate installation process.



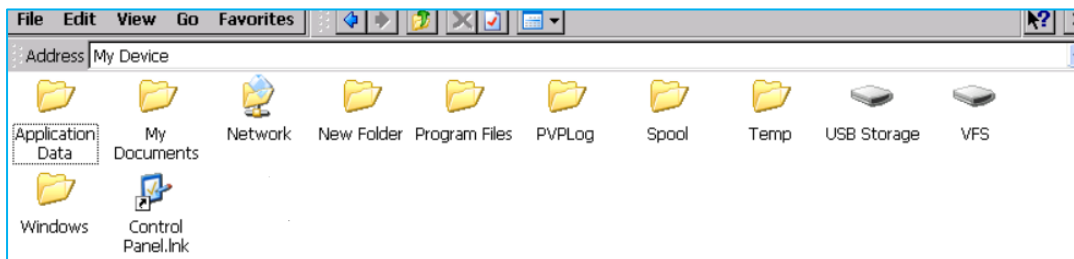
Press 'OK' button to proceed on installation process. Do not alter default installation location.



Default installation folder on PVP is as shown below.



Ensure that 'PVPLog' folder is also created automatically at following location. All CSV files will be log here and will be available for batch report.



Reference Manuals

PVP-PRINT-IM001-EN	Installation Instruction Manual
PVP-PRINT-CM001-EN	Configuration Manual
PVP-PRINT-OM001-EN	Operational Manual
PVP-PRINT-SA001-EN	Reference System Architecture

www.sharadsoft.com

Feedback/Support

Your comments will help us serve your iris authentication needs better. If you have any suggestions/support require, then drop the email on 'info@sharadsoft.com'.

Location: Mumbai, India.