

A dark blue vertical bar is on the left side of the page. A blue arrow points to the right from the bar, positioned above the title.

Configuration Manual

PanelView Plus based Batch Report

PVP-PRINT-CM001-EN

Contents

Prerequisites	2
<i>Operating System</i>	2
<i>Database</i>	2
<i>Rockwell Software</i>	2
<i>Sharadsoft Software</i>	2
<i>Hardware</i>	2
Initial Steps	3
Section1: Configuration for PanelView Plus	3
Configuration-BatchReportME	3
Configuration-FTViewME application for PVP Terminal	5
Reference Manuals	18

Prerequisites

Operating System

Workstation: Windows 7 Professional with Service Pack 1 (64 bit)

Database

SQL Compact Edition (Version 3.5)

Rockwell Software

FactoryTalk View Studio (Version 10)

Sharadsoft Software

BatchReportME: For Batch report through PanelView Plus Terminal

Hardware

PanelView Plus 7 Performance Display

Network/USB based printer (PCL5 Compatible)

Note: We have tested above application on HP make LaserJet Pro M403n

Initial Steps

1. First refer and follow Installation Instruction Manual (PVP-PRINT-IM001-EN.pdf)
2. Ensure System architecture is like reference system architecture (PVP-PRINT-SA001-EN.pdf)

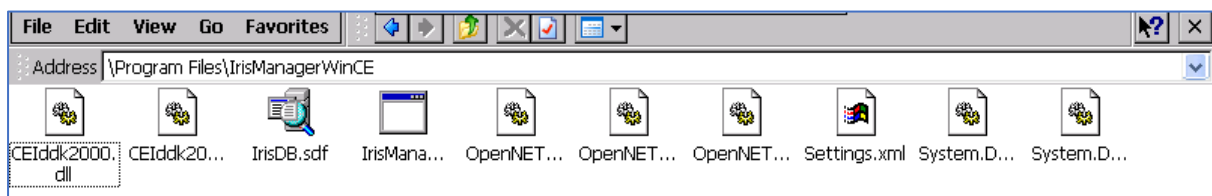
Section1: Configuration for PanelView Plus

Configuration-BatchReportME

Access Desktop mode of PVP and double tap on 'My Device' icon.



Navigate to 'Program Files\BatchReportME\' folder



Copy 'Settings.xml' file to external media like USB device and take it to regular PC for editing purpose. We required to set the parameter as per application requirement.

On regular pc open it using Notepad application.

```

Settings - Notepad
File Edit Format View Help
<?xml version="1.0" encoding="utf-8" ?>
<configuration>
<appSettings>
  <add key="ActivationKey" value="12345" />
  <add key="CompanyName" value="ABC Pvt. Ltd." />
  <add key="Parameter1Name" value="Parameter1" />
  <add key="Parameter2Name" value="Parameter2" />
  <add key="Parameter3Name" value="Parameter3" />
  <add key="Parameter4Name" value="Parameter4" />
  <add key="Parameter5Name" value="Parameter5" />
  <add key="Parameter6Name" value="Parameter6" />
  <add key="Parameter7Name" value="Parameter7" />
  <add key="Parameter8Name" value="Parameter8" />
  <add key="Parameter9Name" value="Parameter9" />
  <add key="Parameter10Name" value="Parameter10" />
  <add key="Parameter11Name" value="Parameter11" />
  <add key="Parameter12Name" value="Parameter12" />
  <add key="Parameter13Name" value="Parameter13" />
  <add key="Parameter14Name" value="Parameter14" />
  <add key="Parameter15Name" value="Parameter15" />
  <add key="Parameter16Name" value="Parameter16" />
  <add key="Parameter17Name" value="Parameter17" />
  <add key="Parameter18Name" value="Parameter18" />
  <add key="Parameter19Name" value="Parameter19" />
  <add key="Parameter20Name" value="Parameter20" />
  <add key="Parameter1Unit" value="Unit1" />
  <add key="Parameter2Unit" value="Unit2" />
  <add key="Parameter3Unit" value="Unit3" />
  <add key="Parameter4Unit" value="Unit4" />
  <add key="Parameter5Unit" value="Unit5" />
  <add key="Parameter6Unit" value="Unit6" />
  <add key="Parameter7Unit" value="Unit7" />
  <add key="Parameter8Unit" value="Unit8" />
  <add key="Parameter9Unit" value="Unit9" />
  <add key="Parameter10Unit" value="Unit10" />
  <add key="Parameter6Unit" value="Unit6" />
  <add key="Parameter7Unit" value="Unit7" />
  <add key="Parameter8Unit" value="Unit8" />
  <add key="Parameter9Unit" value="Unit9" />
  <add key="Parameter10Unit" value="Unit10" />
  <add key="Parameter11Unit" value="Unit11" />
  <add key="Parameter12Unit" value="Unit12" />
  <add key="Parameter13Unit" value="Unit13" />
  <add key="Parameter14Unit" value="Unit14" />
  <add key="Parameter15Unit" value="Unit15" />
  <add key="Parameter16Unit" value="Unit16" />
  <add key="Parameter17Unit" value="Unit17" />
  <add key="Parameter18Unit" value="Unit18" />
  <add key="Parameter19Unit" value="Unit19" />
  <add key="Parameter20Unit" value="Unit20" />
  <add key="Parameter1Enable" value="1" />
  <add key="Parameter2Enable" value="1" />
  <add key="Parameter3Enable" value="0" />
  <add key="Parameter4Enable" value="0" />
  <add key="Parameter5Enable" value="0" />
  <add key="Parameter6Enable" value="0" />
  <add key="Parameter7Enable" value="0" />
  <add key="Parameter8Enable" value="0" />
  <add key="Parameter9Enable" value="0" />
  <add key="Parameter10Enable" value="0" />
  <add key="Parameter11Enable" value="0" />
  <add key="Parameter12Enable" value="0" />
  <add key="Parameter13Enable" value="0" />
  <add key="Parameter14Enable" value="0" />
  <add key="Parameter15Enable" value="0" />
  <add key="Parameter16Enable" value="0" />
  <add key="Parameter17Enable" value="0" />
  <add key="Parameter18Enable" value="0" />
  <add key="Parameter19Enable" value="0" />
  <add key="Parameter20Enable" value="0" />
  <add key="PrintInterval" value="5" />
</appSettings>
</configuration>
  
```

After editing, save the file and copy it back to PVP terminal on its default location.

ActivationKey: Enter activation key to activate BatchReportME software

Company Name: Enter company name which you would like to reflect in Batch report

Parameter1Name to Parameter20Name: Enter name of the Parameter which will be reflected in Parameter report.

Parameter1Unit to Parameter20Unit: Enter unit which will be reflected in Parameter report

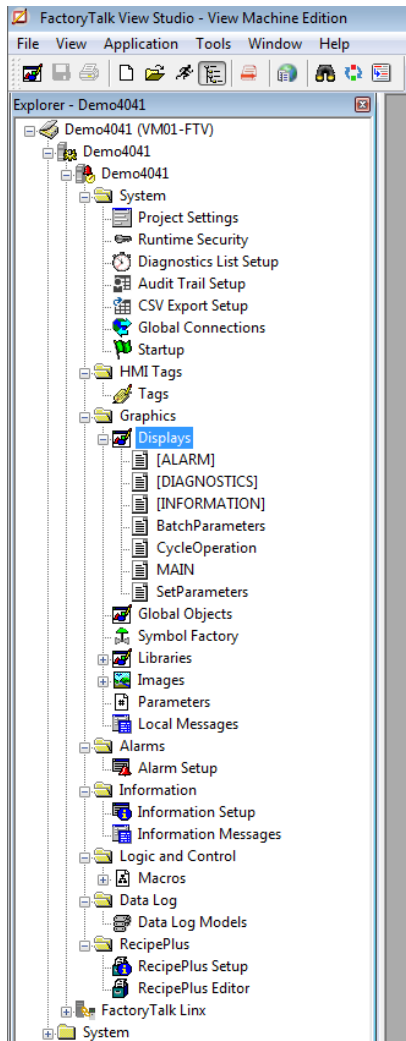
Parameter1Enable to Parameter20Enable: Enter 1 if you would like to include that specific parameter into the parameter report. Note that Parameters print sequence number will be remain same even if they are enable /disable.

For Developer: Configure parameter in sequence which you want to take printout.

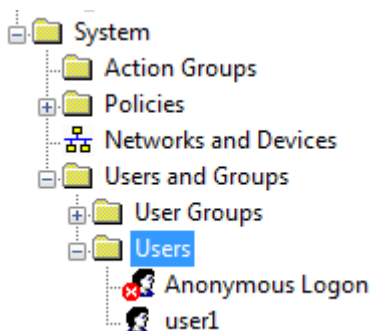
Example: If you want to print 4 parameters then use first four parameters only instead of 1, 3, 4,7 etc. You can configure it at CSVDataLog ActiveX in FTView Studio.

Configuration-FTViewME application for PVP Terminal

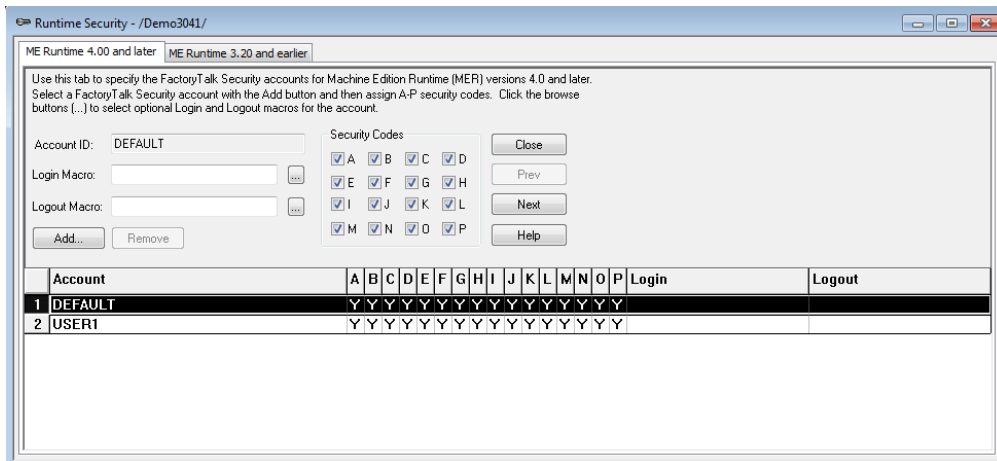
Overall tree structure of FTView ME application for PVP is as follows;



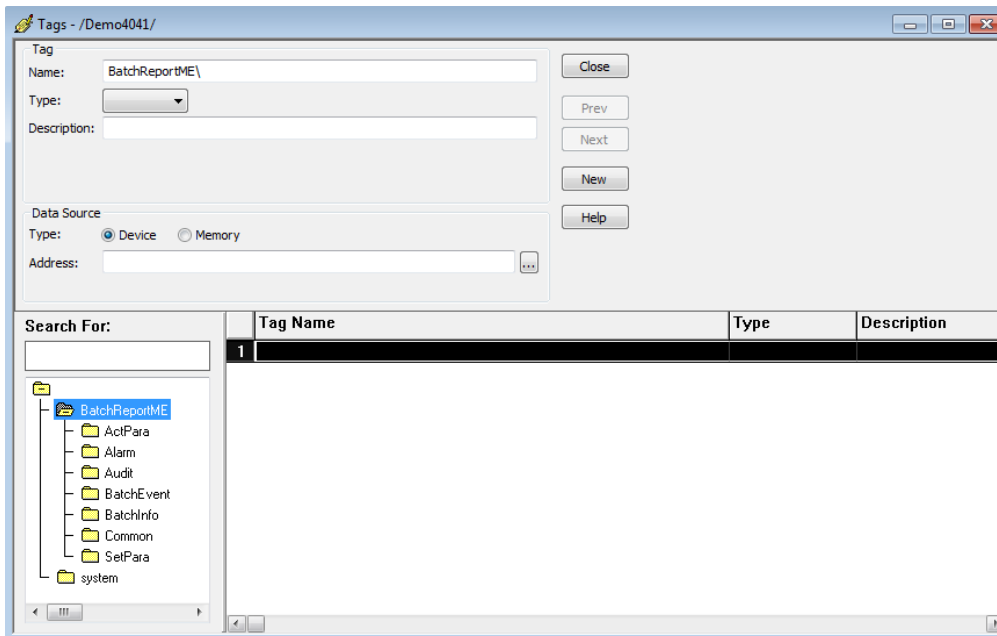
Add users/groups. For this sample application we configured 'user1'.



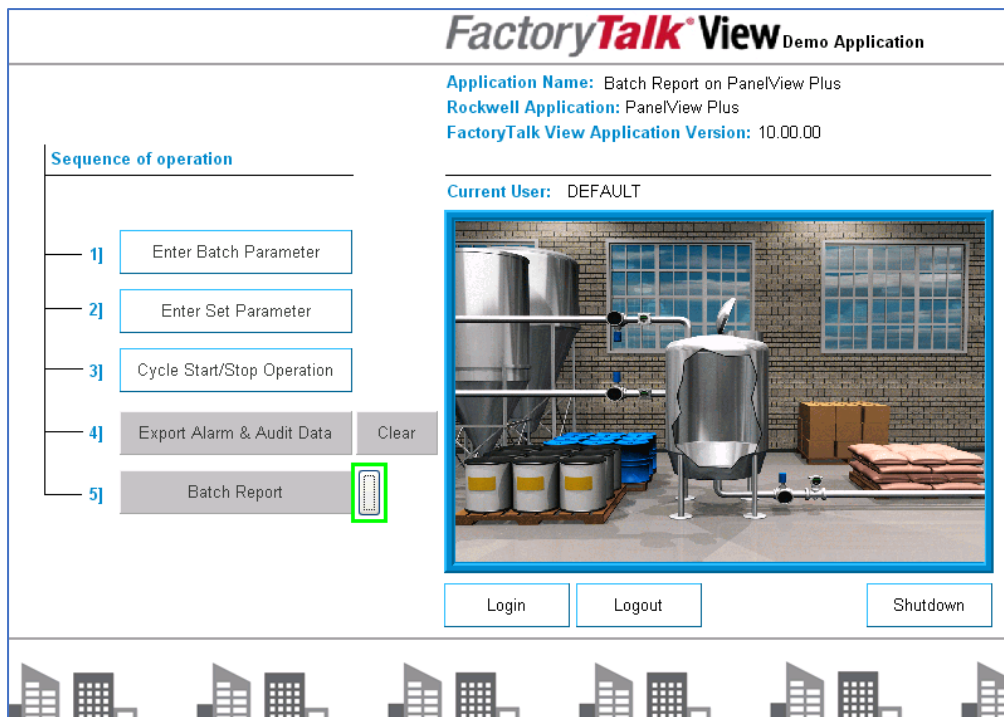
Add users/groups to runtime security. Assign security letters as per your requirement.



Create tag database;



We have developed some screens for sample application as follows;



Enter Batch Parameters		
Location	Mumbai	String
Department	Production	String
Equipment Name	Equipment1	String
Equipment Code	E001	String
Product Name	P001	String
Batch Number	B001	String
Run Number	1	Numeric

X
Enter Set Parameters

Parameter 1	0.00	Deg.C	Numeric
Parameter 2	0.00	Amp	Numeric
Parameter 3	0.00	Ltr.	Numeric
Parameter 4	0.00	Kg.	Numeric
Parameter 5	0.00	min.	Numeric
Parameter 6	0.00	rpm	Numeric

X
Cycle/Operation
07/23/2018 01:33:11

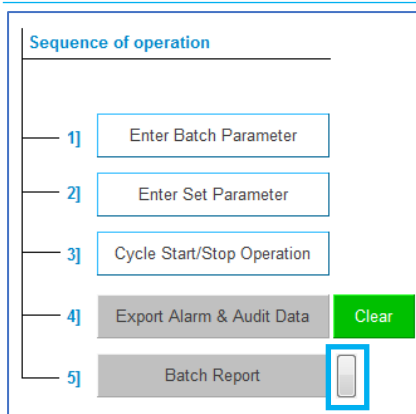
Setpoint log one by one 1 2 3 4 5 6 0 Clear

Cycle Start
Cycle Stop
Cycle Off
Cycle Not Running
Event:

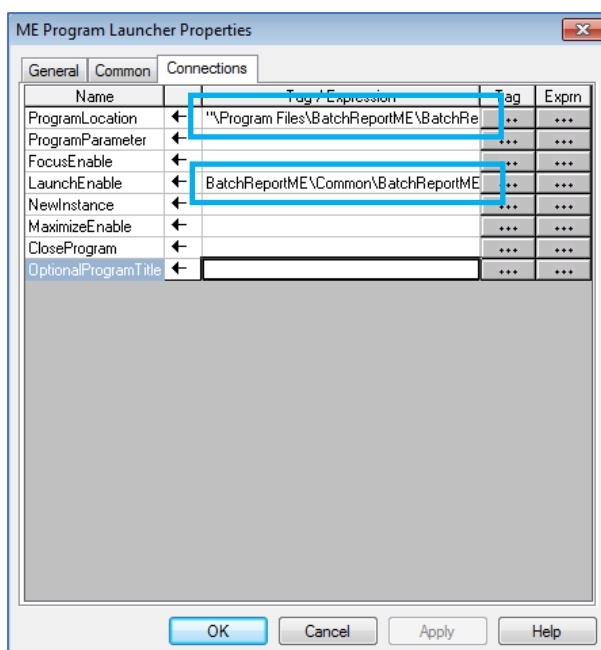
Cycle events
Event1
Trigger
Event2
Trigger
Event3
Trigger
Clear Event

Running values	Set Parameters	Alarms
0.00	0.00	Alarm1
0	0	Alarm2

MECSVDataLog1	Batch Info CSV Log	(One time - Cycle Start button press event)
MECSVDataLog2	Set Parameter CSV Log	(One time - Cycle Start button press event)
MECSVDataLog3	Act Parameter CSV Log	(On Interval - During Cycle Running bit on)
MECSVDataLog4	Batch Event CSV Log	(On Event - During Cycle Running bit on)
MECSVDataLog5	Batch End CSV Log	(One time - Cycle end event)



Use 'ME Program Launcher' ActiveX to call BatchReportME app while runtime. Define Program location and assign trigger tag.



Program Location: "%Program Files\BatchReportME\BatchReportME.exe"

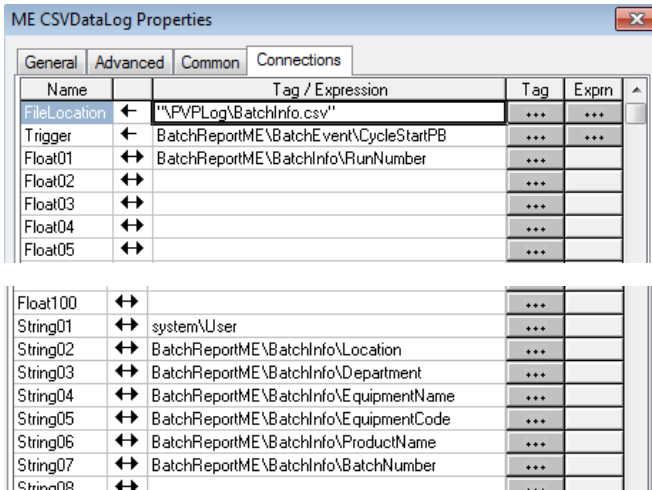
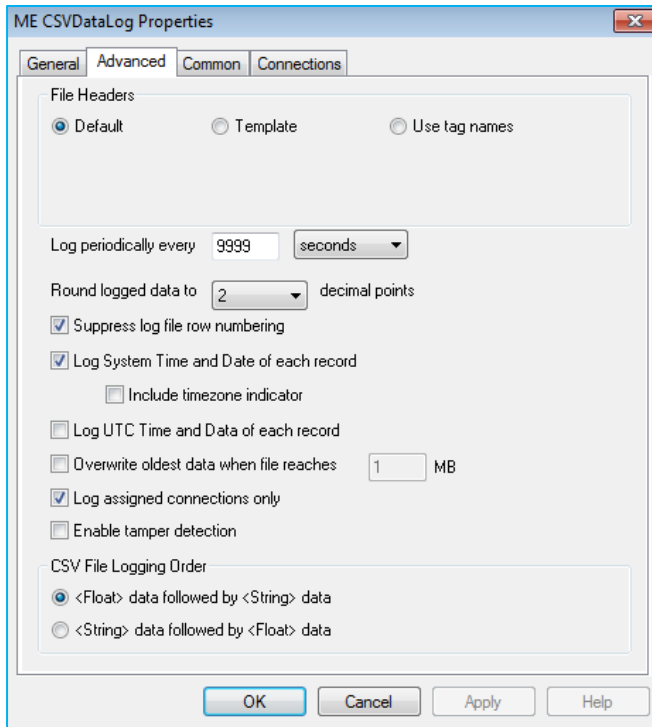
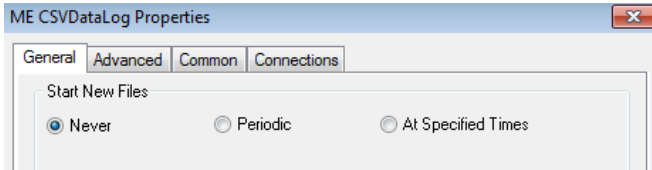
LaunchEnable: BatchReportME\Common\BatchReportMESHOW

MECSVDataLog1	Batch Info CSV Log	(One time - Cycle Start button press event)
MECSVDataLog2	Set Parameter CSV Log	(One time - Cycle Start button press event)
MECSVDataLog3	Act Parameter CSV Log	(On Interval - During Cycle Running bit on)
MECSVDataLog4	Batch Event CSV Log	(On Event - During Cycle Running bit on)
MECSVDataLog5	Batch End CSV Log	(One time - Cycle end event)

Note: Configure the all ActiveX as shown below only. Failure to do so will generate error while retrieval of batch report.

Use 'ME CSVDataLog' ActiveX for above mentioned task. Configuration screens for ActiveX are as follows;

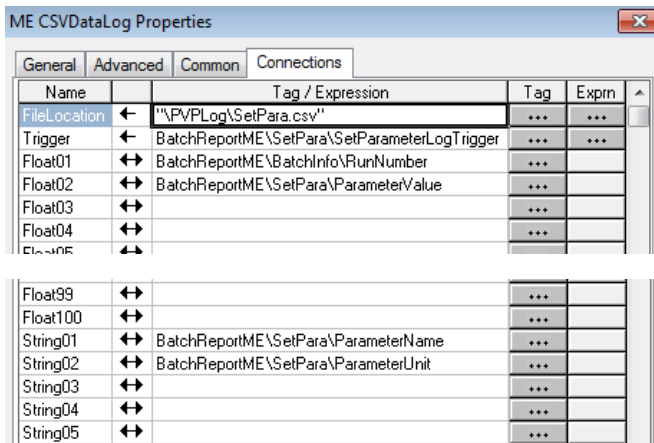
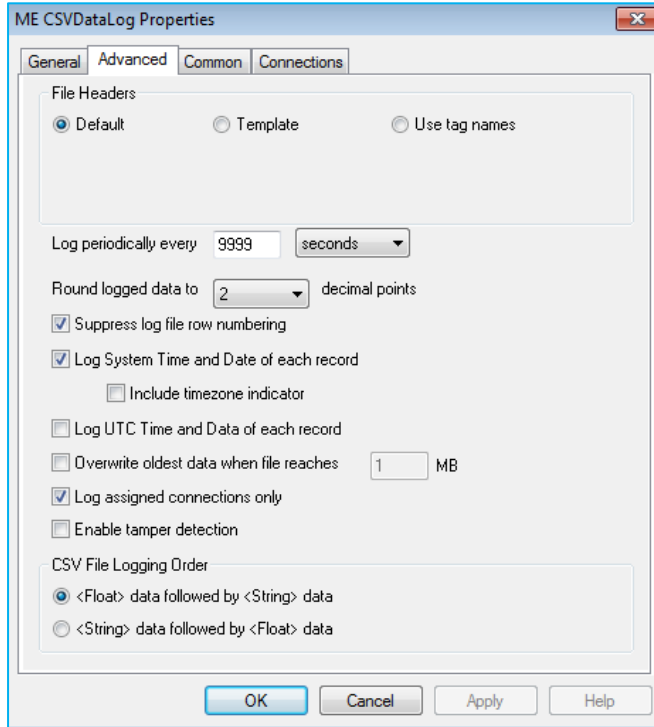
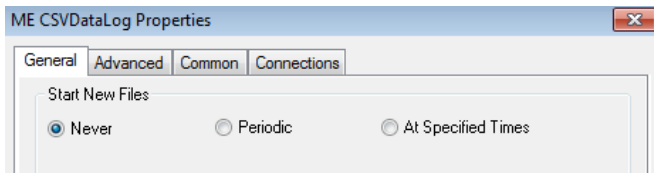
For MECSVDataLog1



Final CSV format expected as follows:

	A	B	C	D	E	F	G	H	I	J	K
1	LocalDate	LocalTime	Alg 1	Str 1	Str 2	Str 3	Str 4	Str 5	Str 6	Str 7	
2	07/22/2018	15:15:22	1	user1	Mumbai	Production	Equipment1	E001	P001	B001	
3											

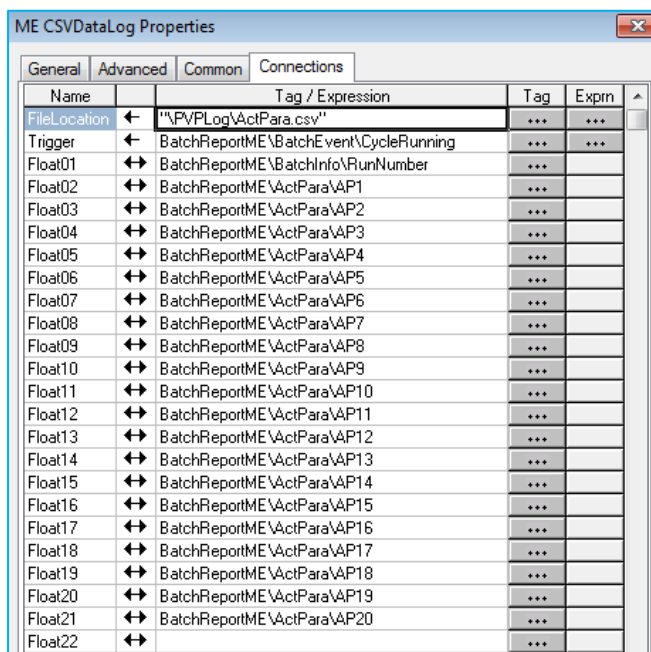
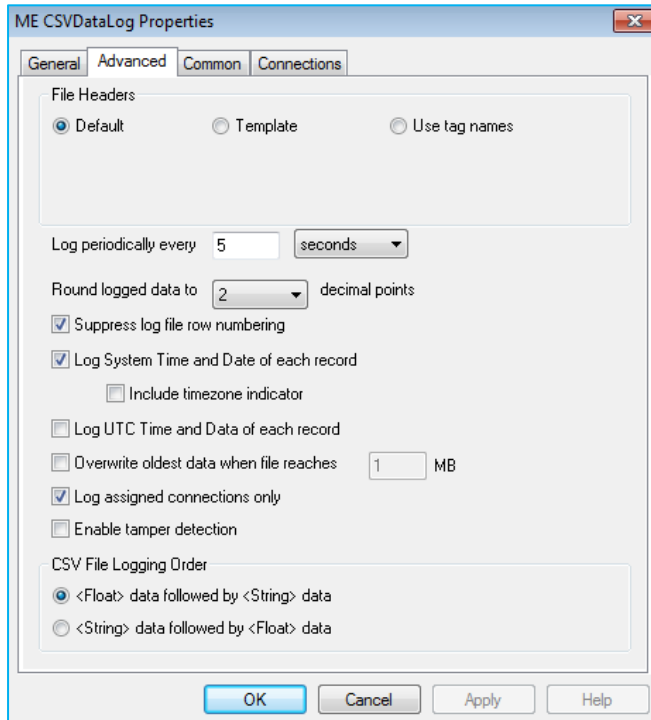
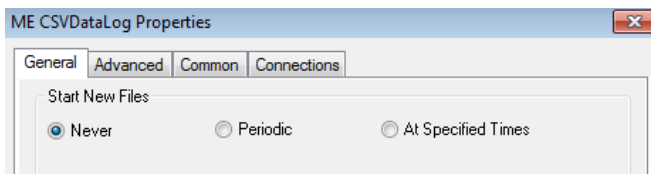
For MECSVDataLog2



Final CSV format expected as follows:

	A	B	C	D	E	F	G
1	LocalDate	LocalTime	Alg 1	Alg 2	Str 1	Str 2	
2	07/22/2018	15:15:09	1	58	Parameter 1	Deg.C	
3	07/22/2018	15:15:11	1	2.5	Parameter 2	Amp	
4	07/22/2018	15:15:13	1	25	Parameter 3	Ltr.	
5	07/22/2018	15:15:15	1	15.5	Parameter 4	Kg.	
6	07/22/2018	15:15:17	1	10	Parameter 5	Min.	
7	07/22/2018	15:15:19	1	20	Parameter 6	rpm	
8							

For MECSVDataLog3

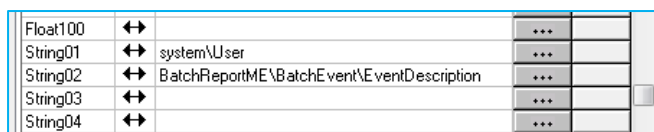
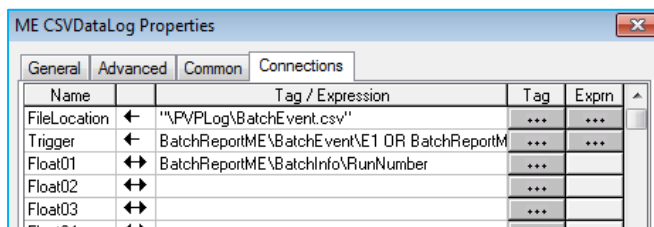
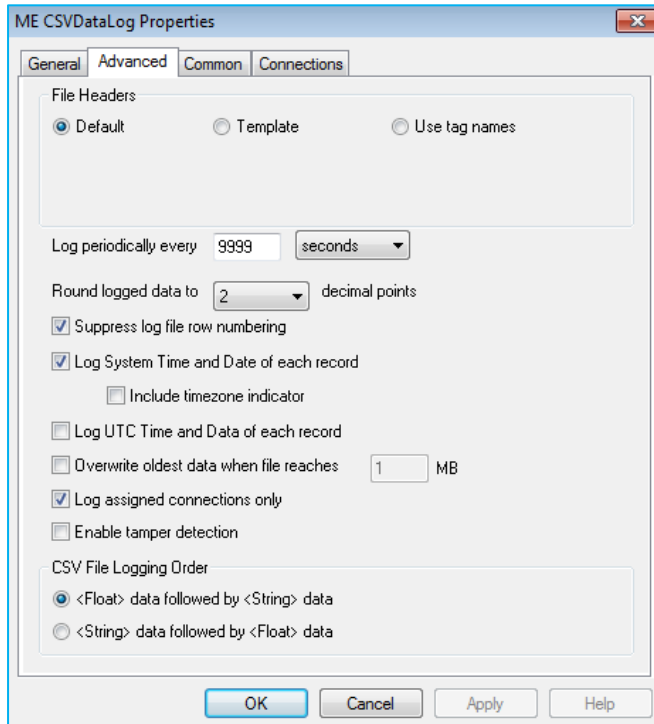
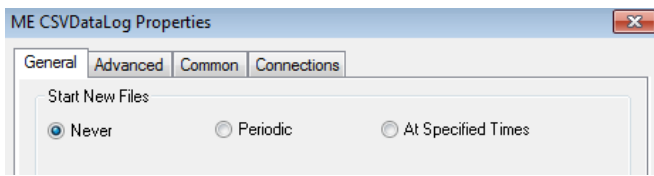


Note: All 20 parameters assignment is mandatory to avoid error in Batch report retrieval. If your application has only 5 parameters, then assign dummy memory (analog) tag for remaining 15 parameters connections.

Final CSV format expected as follows:

	A	B	C	D	E	F	G	H	I	J	K	L	M	N	O	P	Q	R	S	T	U	V	W
1	LocalDate	LocalTime	Alg 1	Alg 2	Alg 3	Alg 4	Alg 5	Alg 6	Alg 7	Alg 8	Alg 9	Alg 10	Alg 11	Alg 12	Alg 13	Alg 14	Alg 15	Alg 16	Alg 17	Alg 18	Alg 19	Alg 20	Alg 21
2	07/22/2018	15:15:34	1	45.12	56	0	0	0	0	0	0	0	0	0	0	0	0	0	0	0	0	0	0
3	07/22/2018	15:15:39	1	45.12	56	0	0	0	0	0	0	0	0	0	0	0	0	0	0	0	0	0	0
4	07/22/2018	15:15:44	1	45.12	56	0	0	0	0	0	0	0	0	0	0	0	0	0	0	0	0	0	0
5	07/22/2018	15:15:49	1	45.12	56	0	0	0	0	0	0	0	0	0	0	0	0	0	0	0	0	0	0
6	07/22/2018	15:15:55	1	45.12	56	0	0	0	0	0	0	0	0	0	0	0	0	0	0	0	0	0	0
7	07/22/2018	15:16:00	1	45.12	56	0	0	0	0	0	0	0	0	0	0	0	0	0	0	0	0	0	0
8	07/22/2018	15:16:05	1	45.12	56	0	0	0	0	0	0	0	0	0	0	0	0	0	0	0	0	0	0
9	07/22/2018	15:16:10	1	45.12	56	0	0	0	0	0	0	0	0	0	0	0	0	0	0	0	0	0	0
10	07/22/2018	15:16:15	1	45.12	56	0	0	0	0	0	0	0	0	0	0	0	0	0	0	0	0	0	0
11	07/22/2018	15:16:20	1	45.12	56	0	0	0	0	0	0	0	0	0	0	0	0	0	0	0	0	0	0
12	07/22/2018	15:16:25	1	45.12	56	0	0	0	0	0	0	0	0	0	0	0	0	0	0	0	0	0	0
13	07/22/2018	15:16:30	1	45.12	56	0	0	0	0	0	0	0	0	0	0	0	0	0	0	0	0	0	0
14	07/22/2018	15:16:35	1	45.12	56	0	0	0	0	0	0	0	0	0	0	0	0	0	0	0	0	0	0
15	07/22/2018	15:16:40	1	45.12	56	0	0	0	0	0	0	0	0	0	0	0	0	0	0	0	0	0	0
16	07/22/2018	15:16:45	1	45.12	56	0	0	0	0	0	0	0	0	0	0	0	0	0	0	0	0	0	0
17																							

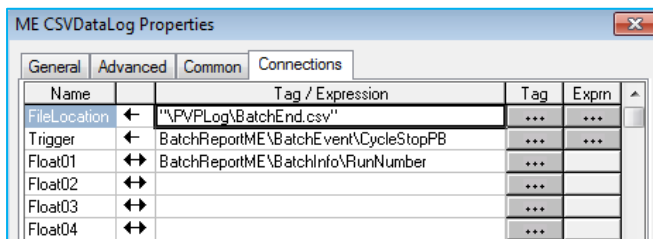
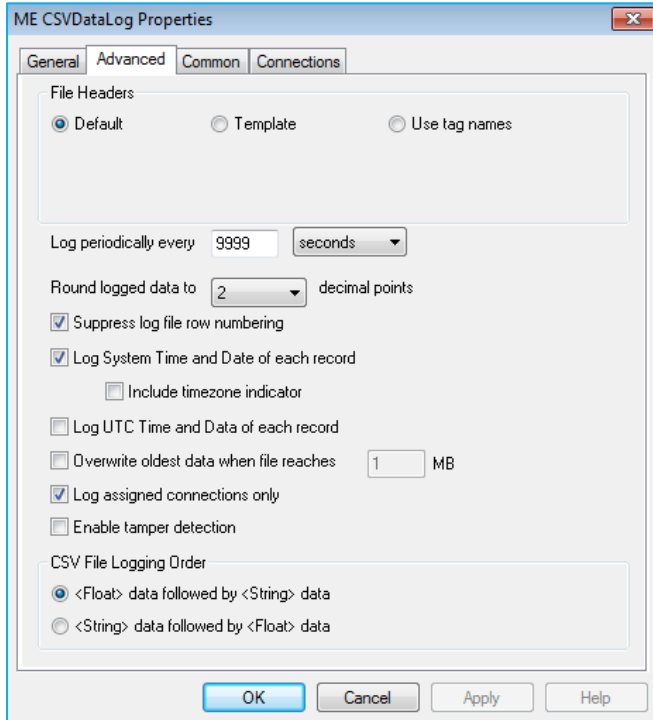
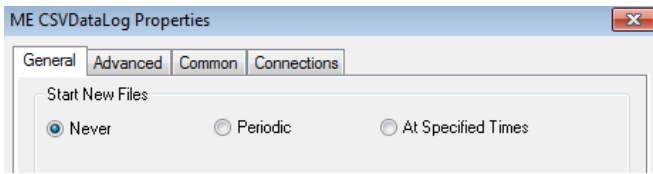
For MECSVDataLog4



Final CSV format expected as follows:

	A	B	C	D	E	F
1	LocalDate	LocalTime	Alg 1	Str 1	Str 2	
2	07/22/2018	15:15:39	1	user1	This is Event1	
3	07/22/2018	15:15:49	1	user1	This is Event2	
4	07/22/2018	15:15:52	1	user1	This is Event3	
5						

For MECSVDataLog5



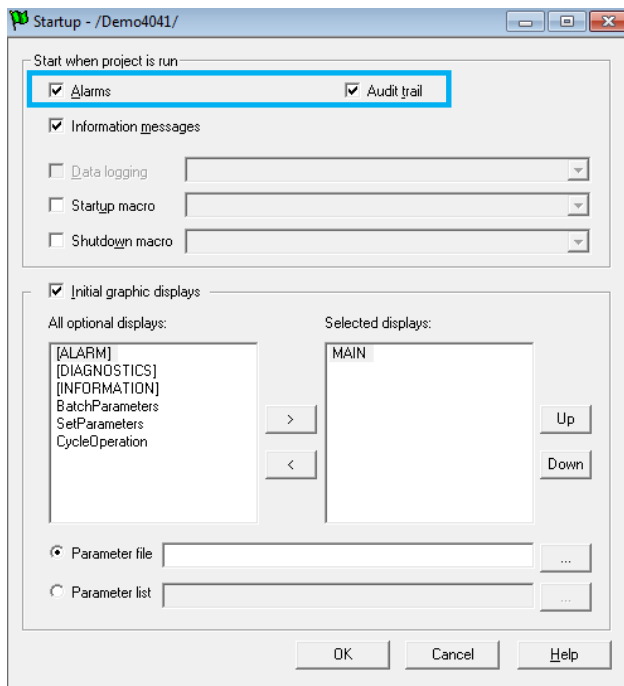
Default CSV format for Alarm data as follows;

	A	B	C	D	E	F	G	H	I	J
1	Trigger Index	Trigger Name	Trigger Value	Message	Identifier	<AllTriggers>	Active	Alarm Time (UTC)	Acknowledge Time (UTC)	LmbHneNfRfj;1FjnyFllmSIS5[Eu00];aMCI0Ja~Nah
2	0	BatchReportME\Alarm\A1	1	Alarm Message-1	0	FALSE	FALSE	07/22/2018 09:45:59	07/22/2018 09:46:01	OlofllIdHrfj;1FjnyFllmSIS5[Eu00];aMCI0Ja~Oah
3	1	BatchReportME\Alarm\A2	1	Alarm Message-2	0	FALSE	FALSE	07/22/2018 09:46:05	07/22/2018 09:46:07	M'HjigFfRfj;1FjnyFllmSIS5[Eu00];aMCI0Ja~Lah
4	Uhh7ibSk'Gj]"Dug@;yDIm6Kl=eDnmTjrmTjjaO]"Hn									
5										

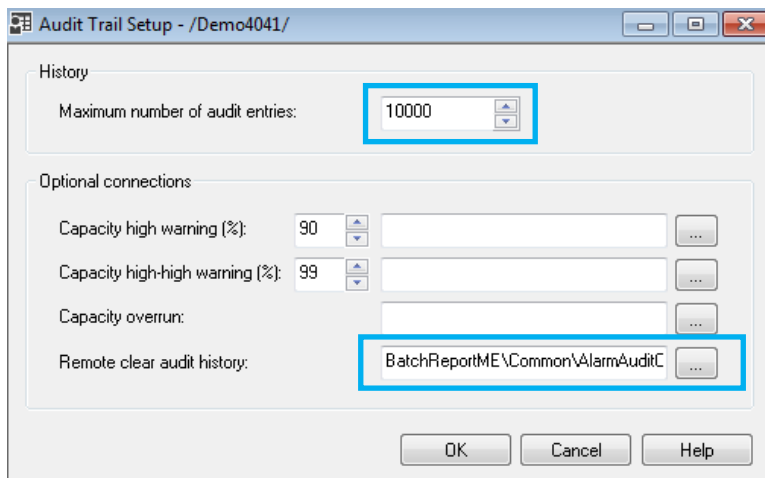
Default CSV format for Audit data as follows;

	A	B	C	D	E	F	G
1	Occurred Time (UTC)	Source	Location	Resource	Username	Message	JlmeMlkaFfR6Gj]1E<yJl]m`SE=bG[hc]ueNnm]<g]B=~Nah
2	07/22/2018 09:44:27	FactoryTalk View ME Station	PVP18528		user1	Successful login of user 'user1'.	LjmGj]cNr6Gj]1E<yJl]m`SE=bG[hc]ueNnm]<g]B=~Oah
3	07/22/2018 09:46:01	FactoryTalk View ME Station	PVP18528		user1	Alarm 'Alarm Message-1' was Acknowledged.	Hj]gFf]kbf;am]l]=7Bu`LllyCnmS]o5]idF]a2FBk1]Crft]l
4	07/22/2018 09:46:07	FactoryTalk View ME Station	PVP18528		user1	Alarm 'Alarm Message-2' was Acknowledged.	L]l]bK]imeK]r6Gj]1E<yJl]m`SE=bG[hc]ueNnm]<g]B=~Mah
5	07/22/2018 09:46:24	FactoryTalk View ME Station	PVP18528		user1	Electronic Signature Action: Write '56.120000' to O]loaldGj]r6Gj]1E<yJl]m`SE=bG[hc]ueNnm]<g]B=~Jah	
6	07/22/2018 09:46:39	FactoryTalk View ME Station	PVP18528		user1	Electronic Signature Action: Write '45' to the tag. O]f]fH]n`Lr6Gj]1E<yJl]m`SE=bG[hc]ueNnm]<g]B=~Kah	
7	of]E;0S]ja];1HudlGoyO]bG@`OMC<1T]rT]cO]kgM]n						
8							

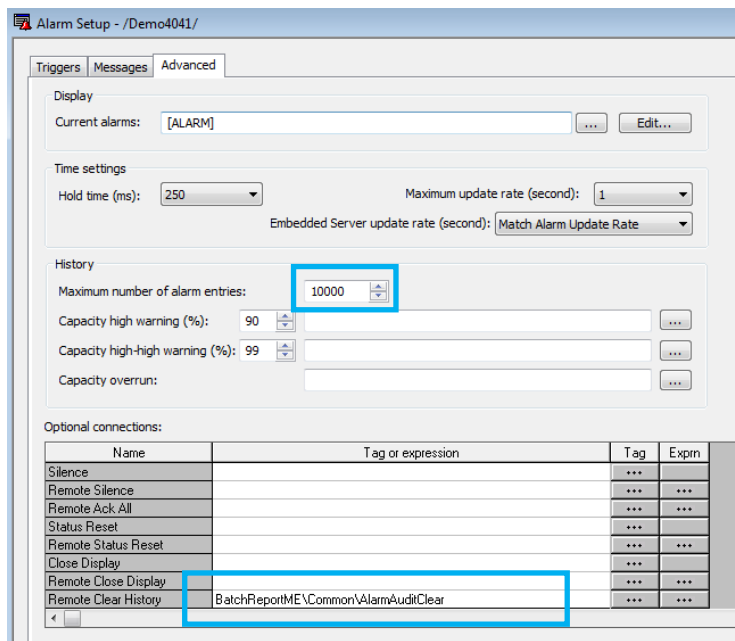
Project Startup setting as follows:



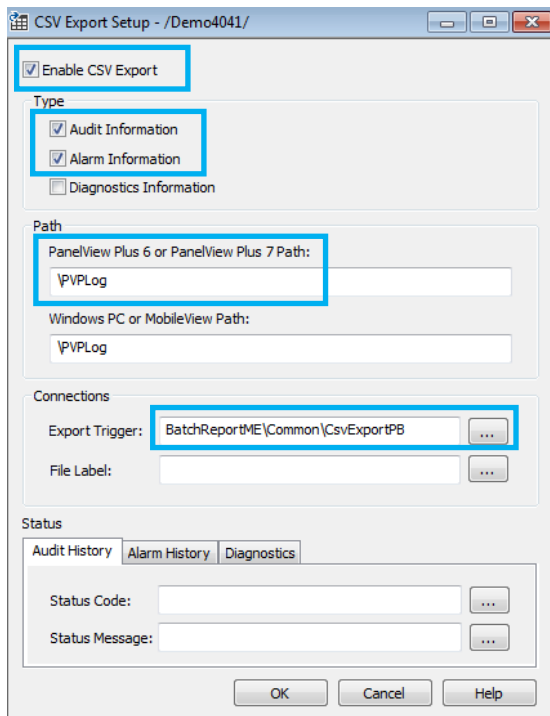
Audit Trail Setup as follows:



Alarm advanced setup as follows:



CSV Export setup as follows:



Now you are ready to create runtime file for PanelView Plus terminal.

Reference Manuals

PVP-PRINT-IM001-EN	Installation Instruction Manual
PVP-PRINT-CM001-EN	Configuration Manual
PVP-PRINT-OM001-EN	Operational Manual
PVP-PRINT-SA001-EN	Reference System Architecture

www.sharadsoft.com

Feedback/Support

Your comments will help us serve your iris authentication needs better. If you have any suggestions/support require, then drop the email on 'info@sharadsoft.com'.

Location: Mumbai, India.