



Installation Instruction Manual

Domain based user iris enrolment & verification

DN-IM001-EN

Contents

Prerequisites	2
<i>Operating System</i>	2
<i>Database</i>	2
<i>Rockwell Software</i>	2
<i>Sharadsoft Software</i>	2
<i>Hardware</i>	2
Iris Driver Installation.....	3
<i>Hardware Connectivity</i>	3
<i>Iris Scanner driver installation on Windows PC</i>	3
<i>Iris Scanner driver installation on PVP</i>	6
<i>SQL Compact Edition installation on PVP</i>	10
Iris Software Installation	12
<i>IrisManagerDomain Installation on PC</i>	12
<i>IrisVerifySE Installation on PC</i>	14
<i>IrisVerifyME Installation on PC</i>	16
<i>IrisVerifyWinCE Installation on PVP</i>	18
Reference Manuals	19

Prerequisites

Operating System

Server operating system: Windows Server 2012 R2 Standard Edition (64 bit)

Workstation: Windows 7 Professional with Service Pack 1 (64 bit)

Database

SQL Server 2014 Standard Edition (64 bit)

Rockwell Software

FactoryTalk View Studio (Version 10)

FactoryTalk View SE Server & Client (Version 10)

FactoryTalk View SE Station (Version 10)

FactoryTalk View ME Station (Version 10)

Sharadsoft Software

IrisManagerDomain: For Iris Enrollment of domain-based user

IrisVerifySE: Iris verification on FTView SE Client/SE Station

IrisVerifyME: Iris verification on FTView ME Station

IrisVerifyCE: Iris verification on PanelView Plus 7 Performance

Hardware

PanelView Plus 7 Performance Display

Iritech, Irishield series MK2120UL (Monocular)

<http://www.irittech.com/products/hardware/irishield%E2%84%A2-series>

Iris Driver Installation

Hardware Connectivity



IriShield™-USB
MK 2120U

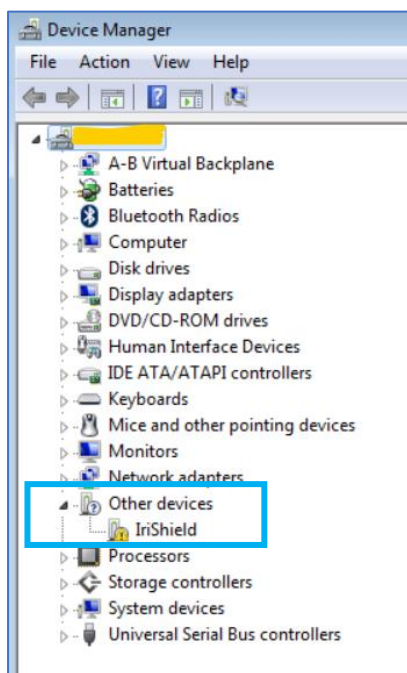


Micro USB cable

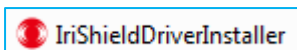
Connect USB based Iris scanner (MK2120UL) to PC/PVP.

Iris Scanner driver installation on Windows PC

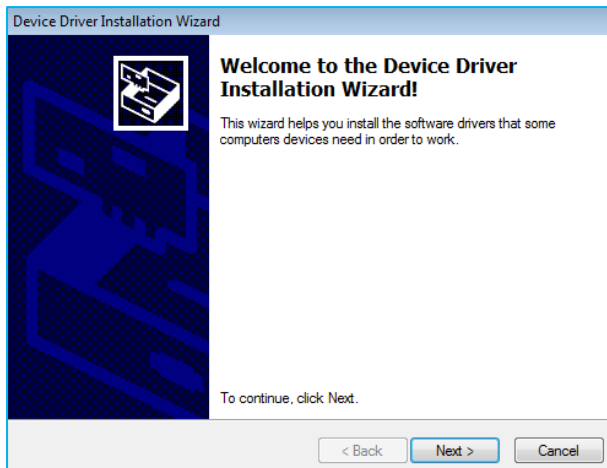
Navigate to 'Device Manager' in windows. In 'Other devices' category you can find 'IriShield' with yellow symbol which indicates that driver need to be installed.



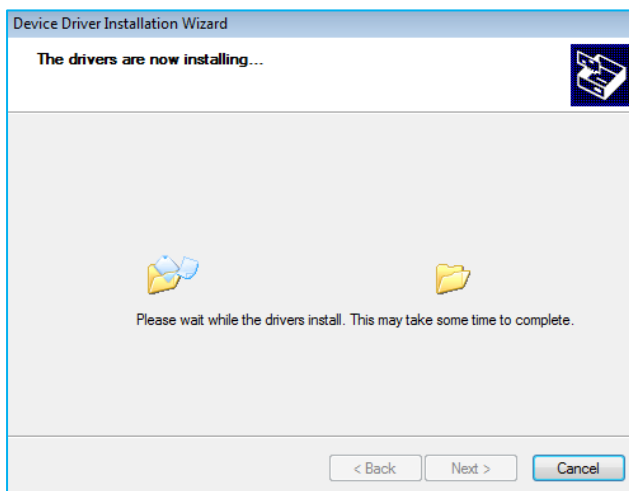
Double click on 'IriShieldDriverInstaller'.



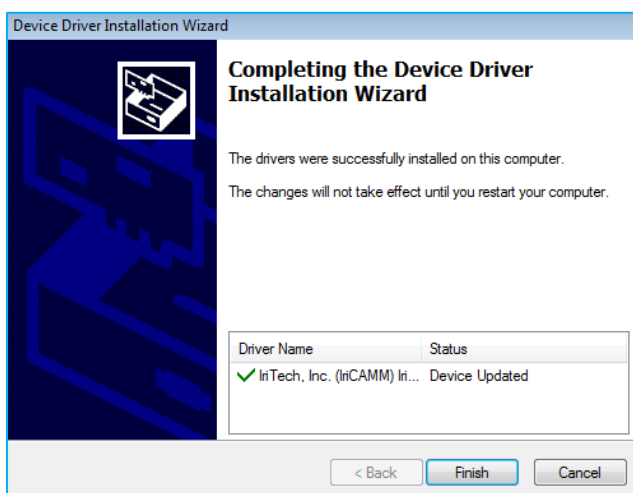
Press 'Next' button.



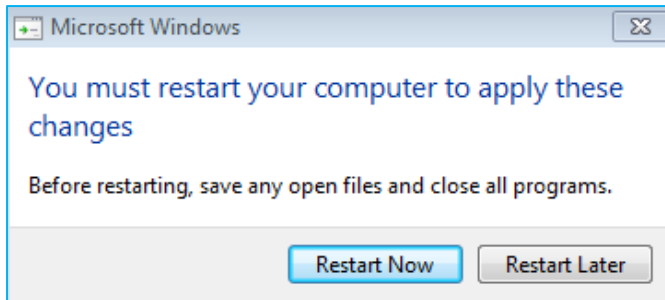
Installation is running...



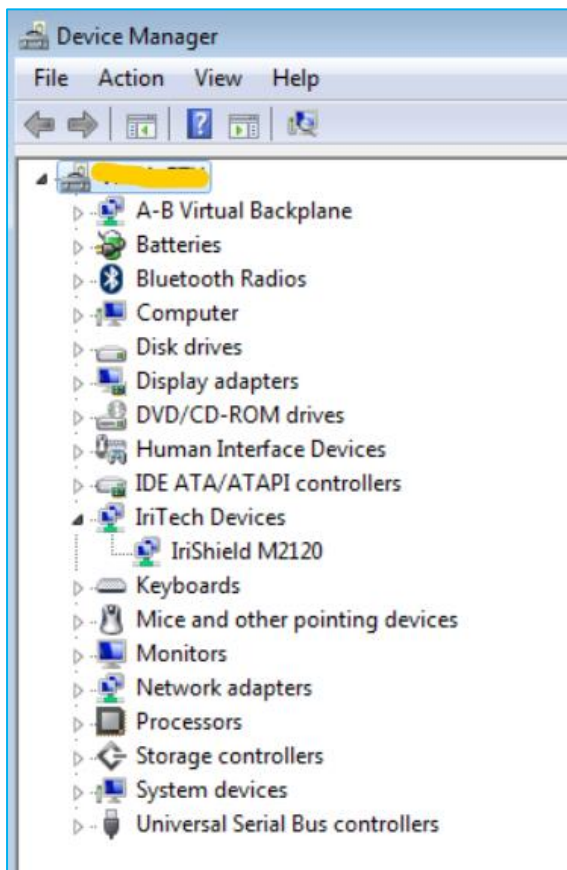
Press 'Finish' button.



Restart the PC.



Following window shows that driver installation is completed successfully.



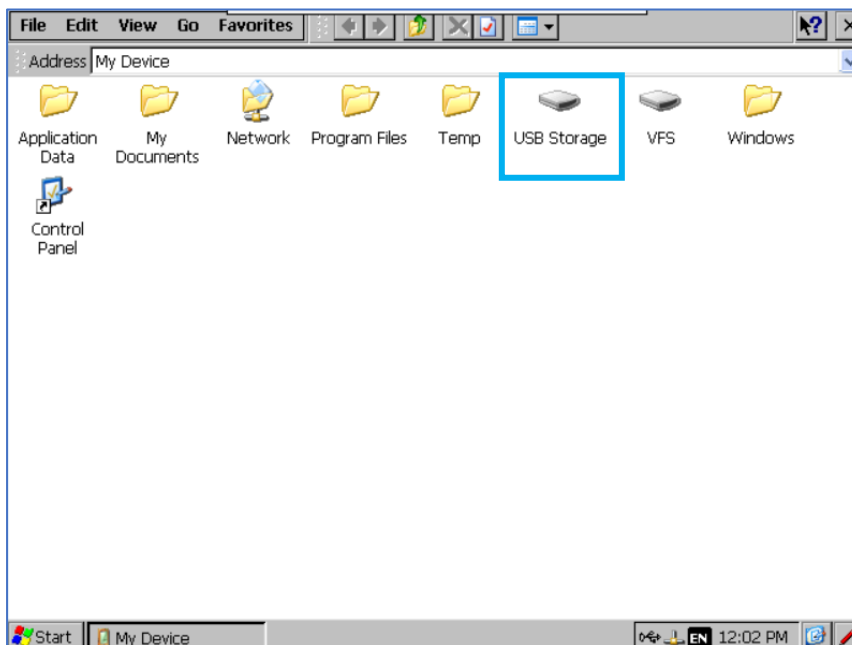
Iris Scanner driver installation on PVP

Connect USB based Iris scanner (MK2120UL) to PVP7 Performance display and install its driver as follows;

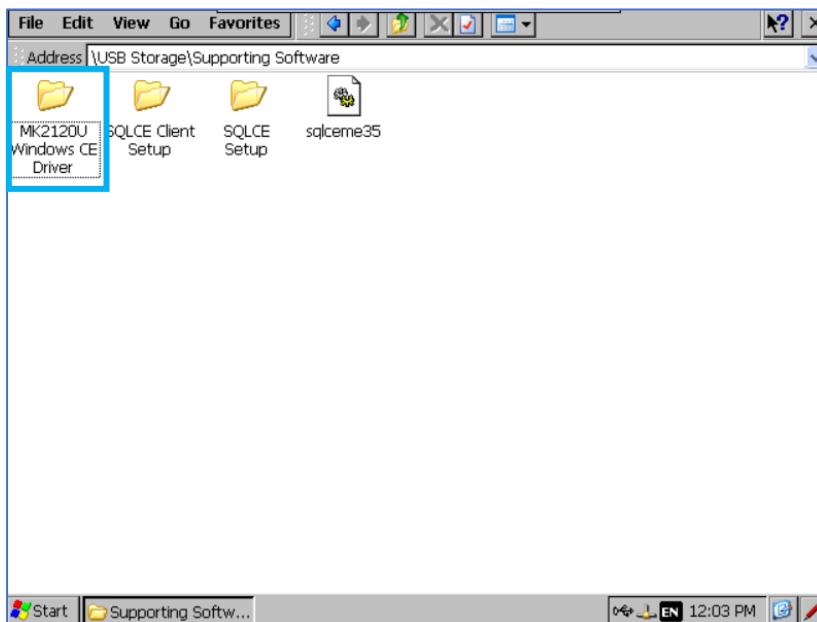
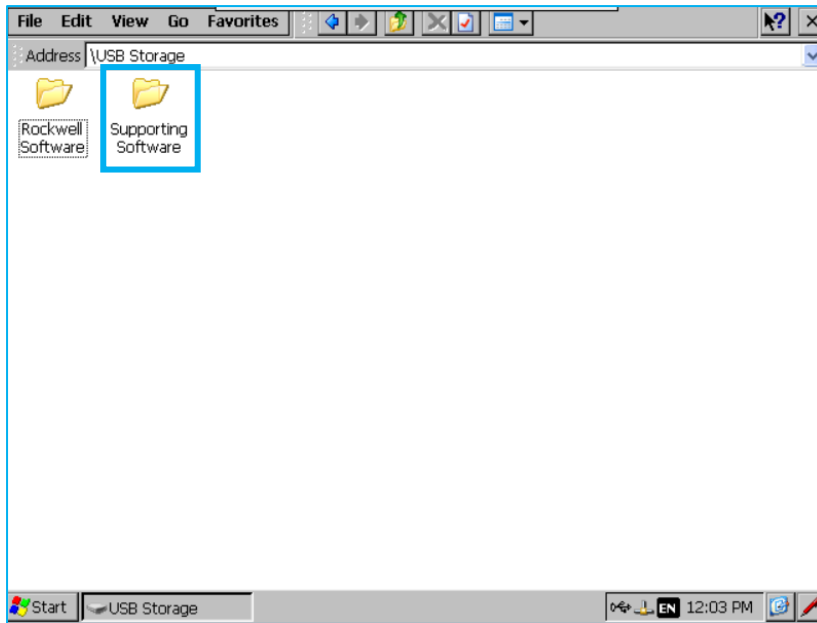
Step-1: Access windows environment of PVP & Enter 'My Device' option



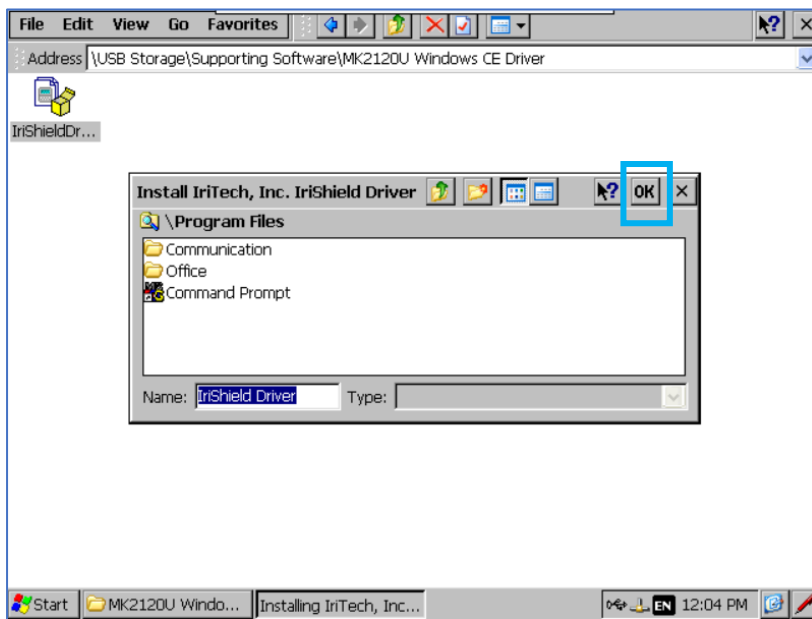
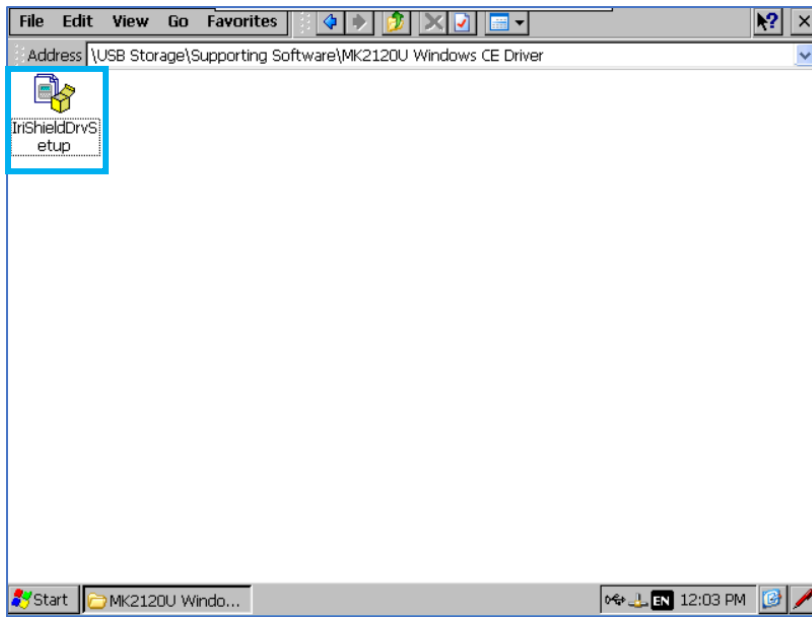
Step-2: Enter 'USB Storage' option where you have already copied supporting software require for Iris scanner.



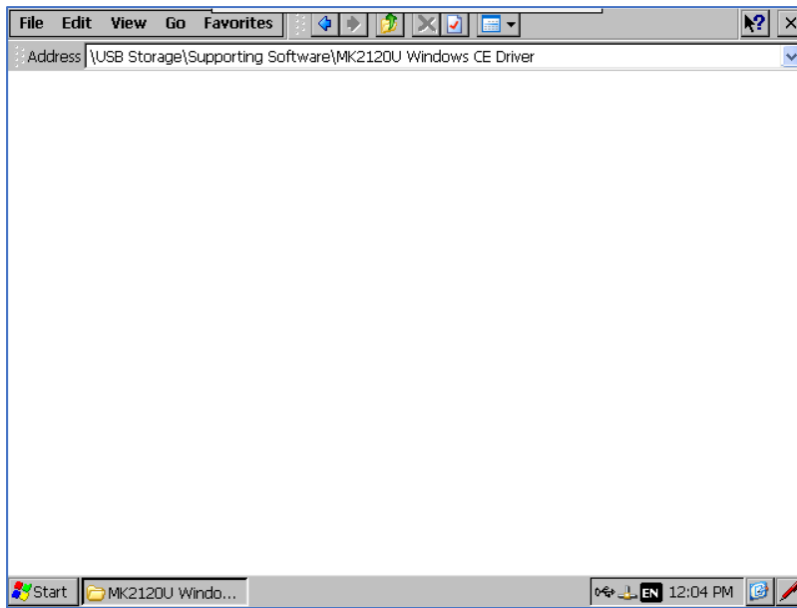
Step-3: Enter 'Supporting Software' and then 'MK2120U Windows CE Driver' folder.



Step-4: Run 'IriShieldDrvSetup' and press 'OK' with by default options on popup window



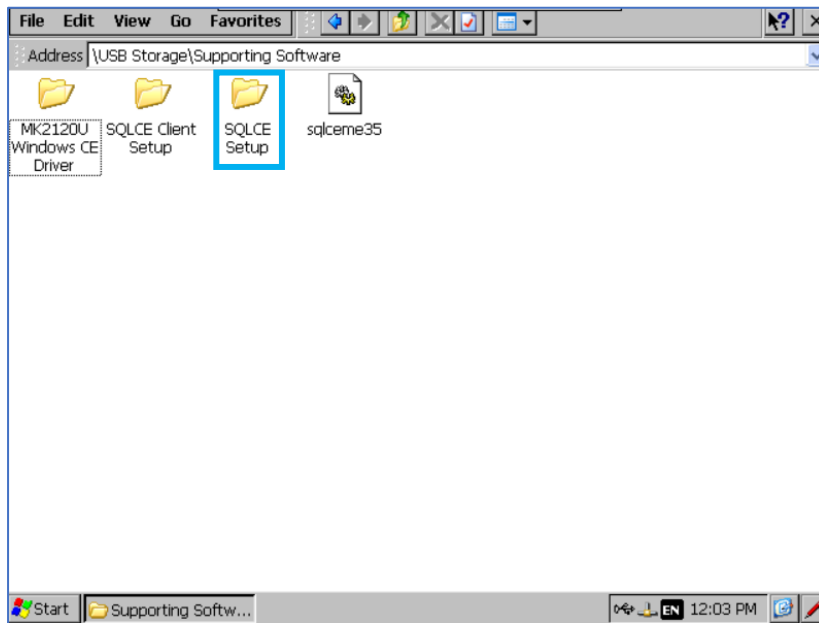
Step-5: Folder will become empty means driver installation work completed successfully.



Note: Iris scanner must be connected at Iris enrolment PC or at iris verification PC/PVP while driver installation.

SQL Compact Edition installation on PVP

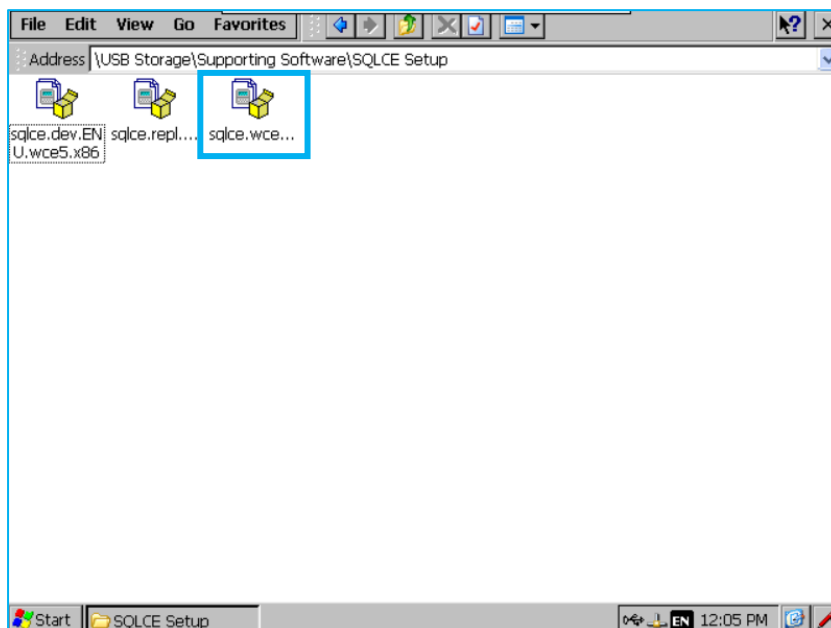
Step-1: Enter 'SQLCE Setup' folder.



Step-2: Double tap/click on all three setups (cab files) one by one and follow the on-screen instructions to complete the SQL CE setup on PVP.

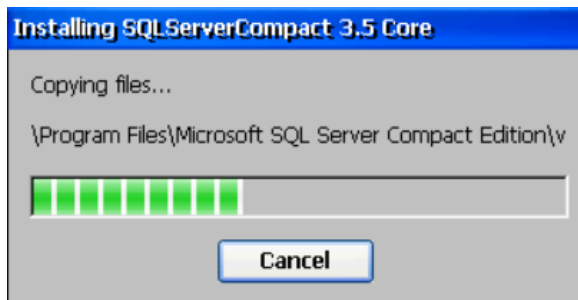
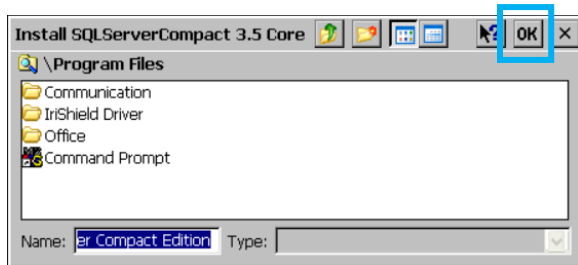
Sequence of setup as follows:

1. sqlce.wce5.x86.cab
2. sqlce.dev.ENU.wce5.x86.cab
3. sqlce.repl.wce5.x86.cab

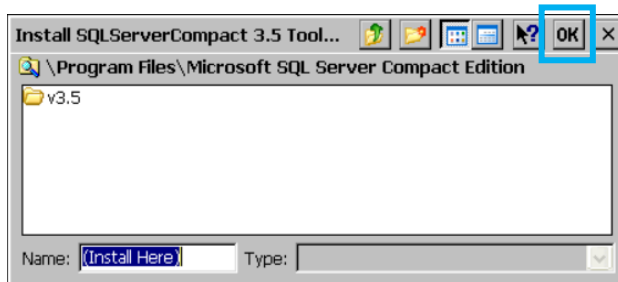


Note: Keep default options as it is.

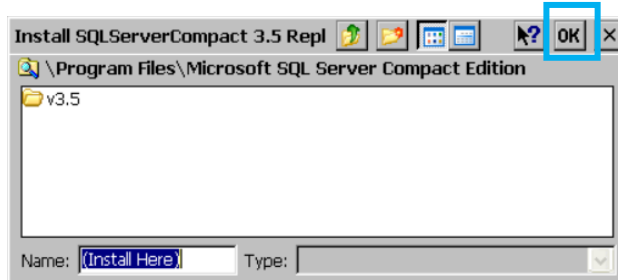
Step-2.1: Double tap on 'sqlce.wce5.x86.cab'



Step-2.2: Double tap on 'sqlce.dev.ENU.wce5.x86.cab'



Step-2.3: Double tap on 'sqlce.repl.wce5.x86.cab'



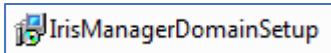
Summary

Here we completed iris scanner driver installation & SQL CE installation on PanelView Plus device.

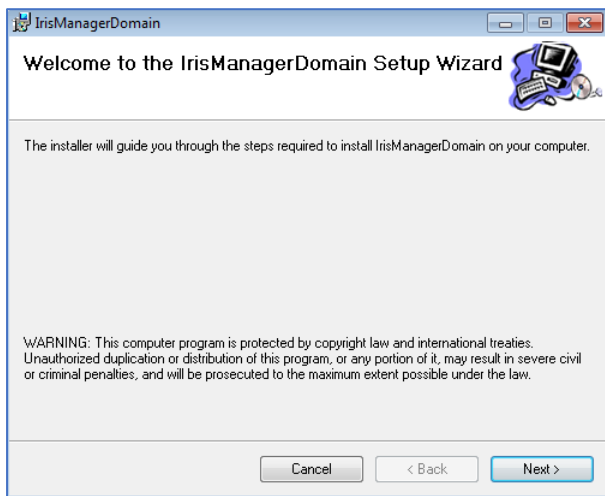
Iris Software Installation

IrisManagerDomain Installation on PC

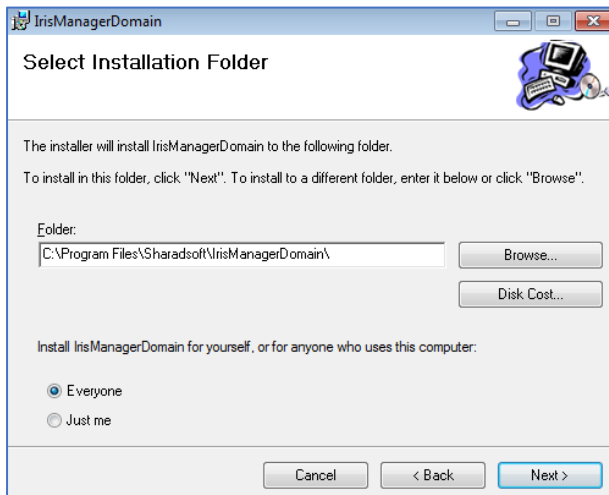
Double click on 'IrisManagerDomainSetup'. It will initiate installation process.



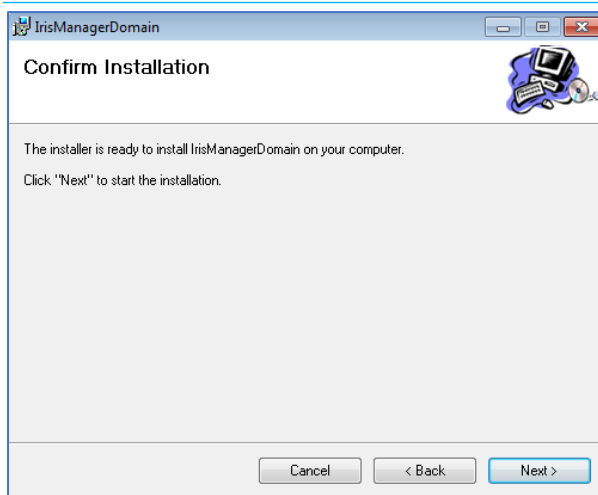
Follow the onscreen window to complete the installation process.



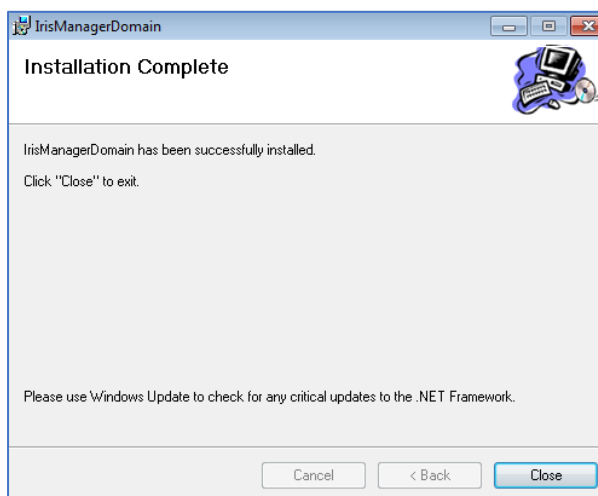
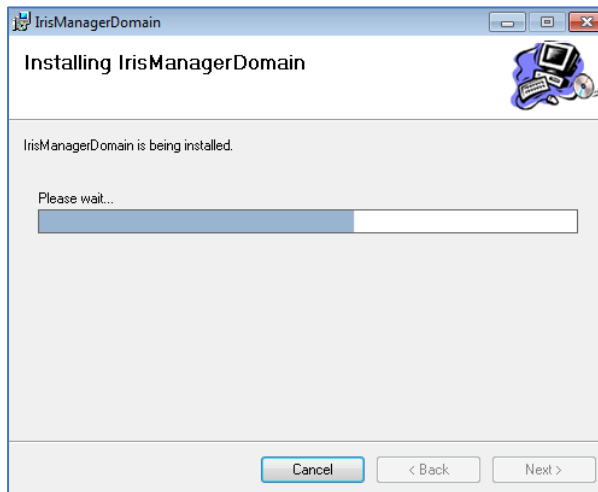
Press 'Next' button.



Select 'Everyone' option and press 'Next' button.



Press 'Next' button.



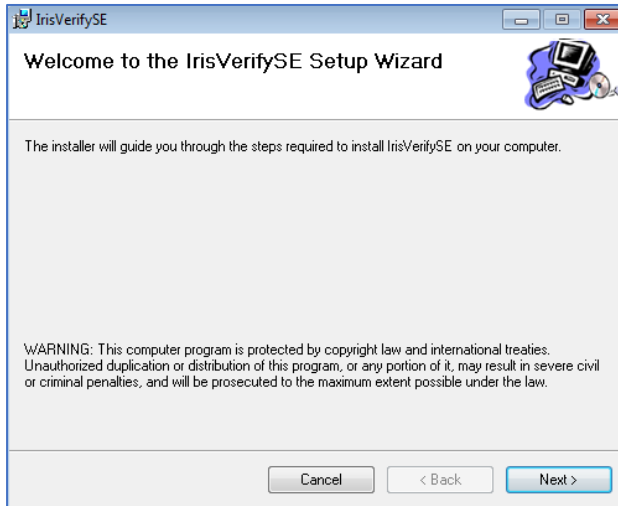
Here we completed installation process. Restart the PC.

IrisVerifySE Installation on PC

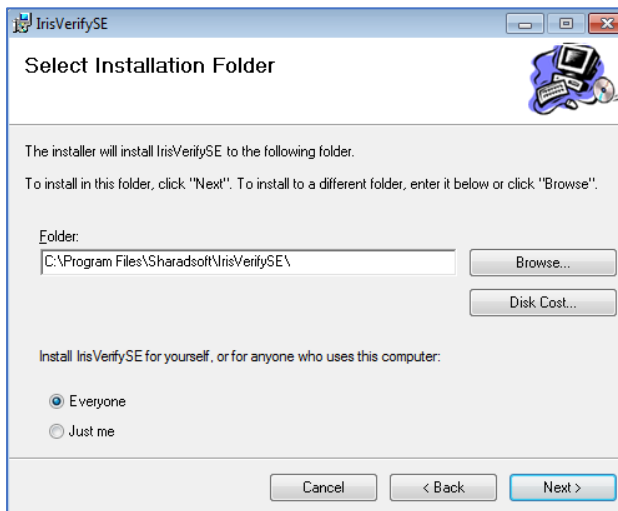
Double click on 'IrisVerifySESetup'. It will initiate installation process.



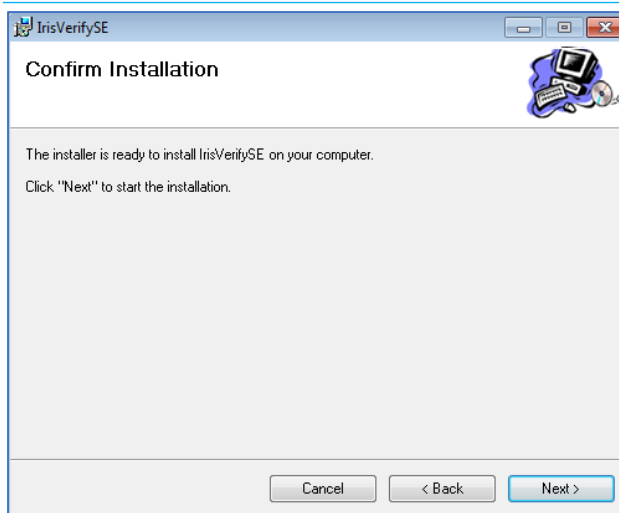
Follow the onscreen window to complete the installation process.



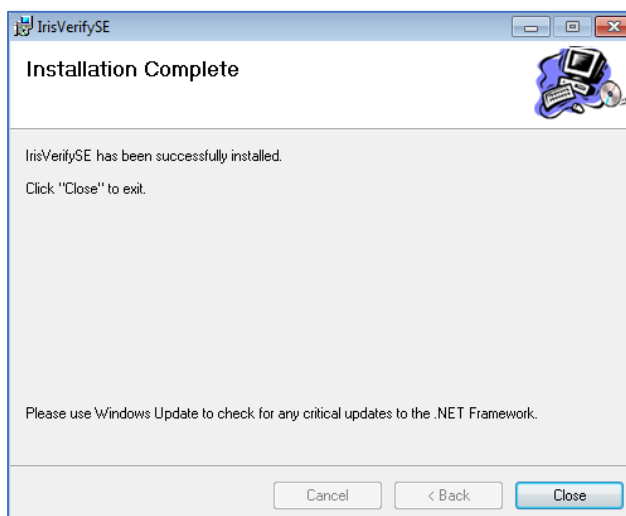
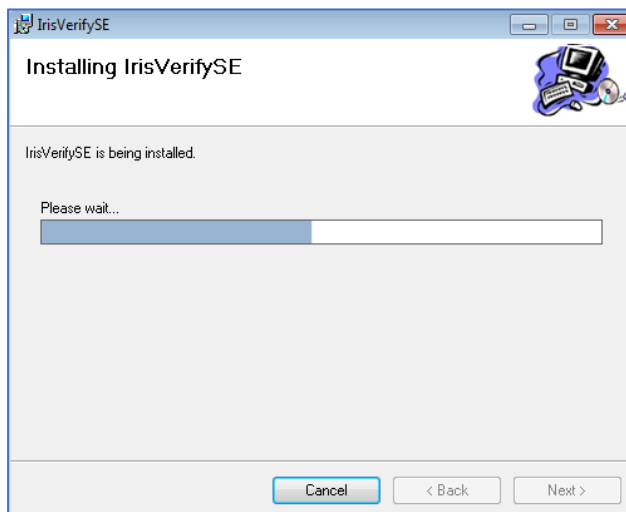
Press 'Next' button.



Select 'Everyone' option and press 'Next' button.



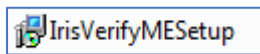
Press 'Next' button.



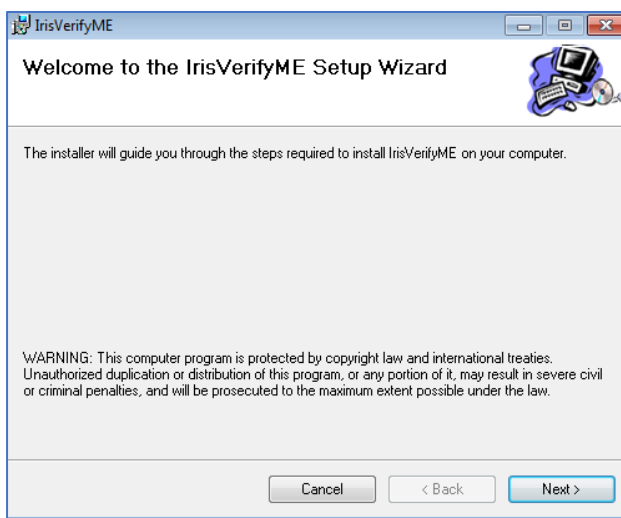
Here we completed installation process. Restart the PC.

IrisVerifyME Installation on PC

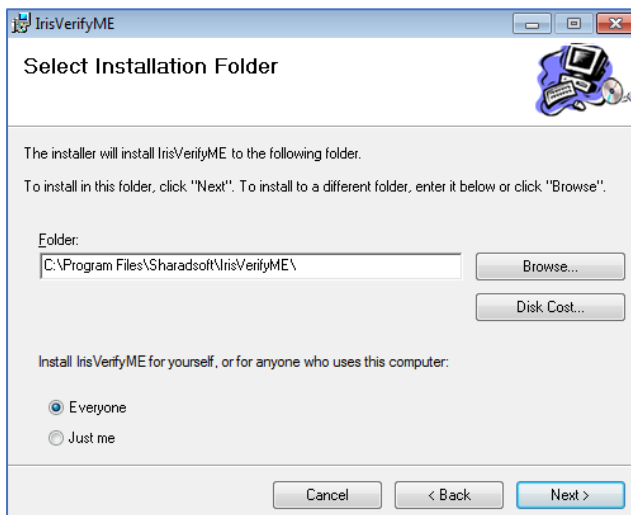
Double click on 'IrisVerifyMESetup'. It will initiate installation process.



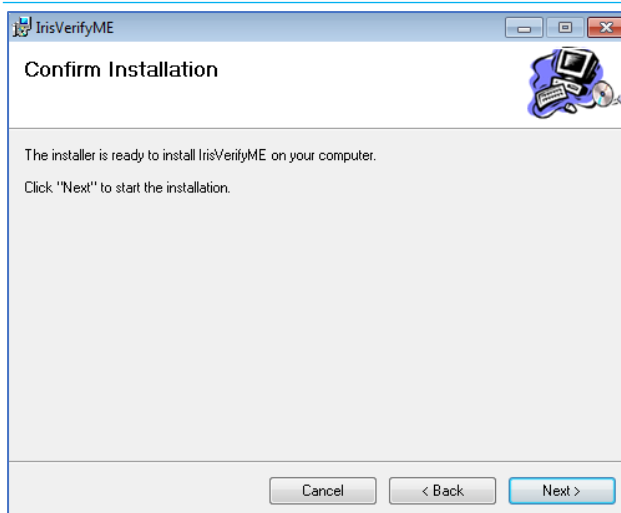
Follow the onscreen window to complete the installation process.



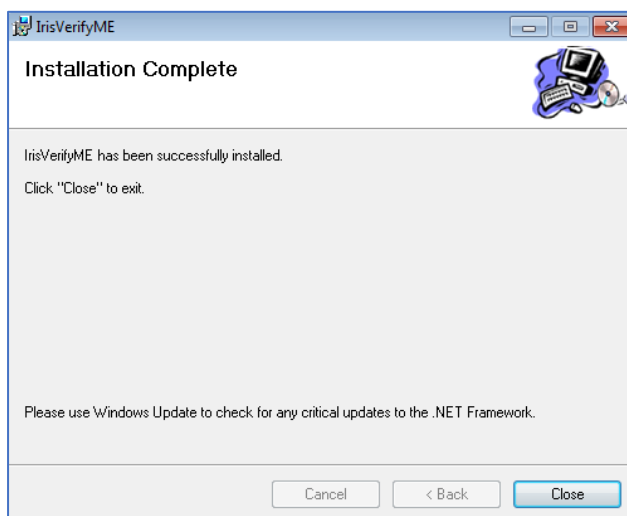
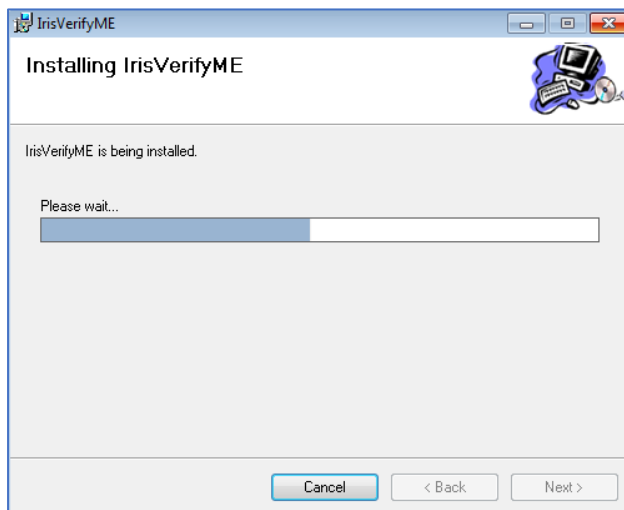
Press 'Next' button.



Select 'Everyone' option and press 'Next' button.



Press 'Next' button.



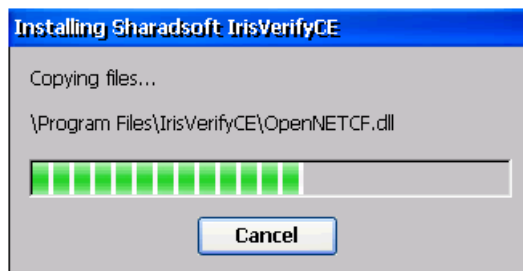
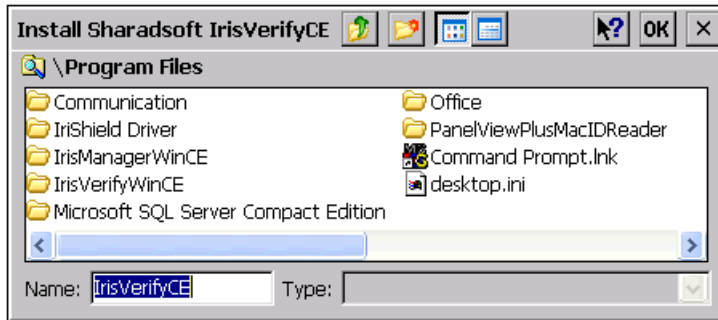
Here we completed installation process. Restart the PC.

IrisVerifyWinCE Installation on PVP

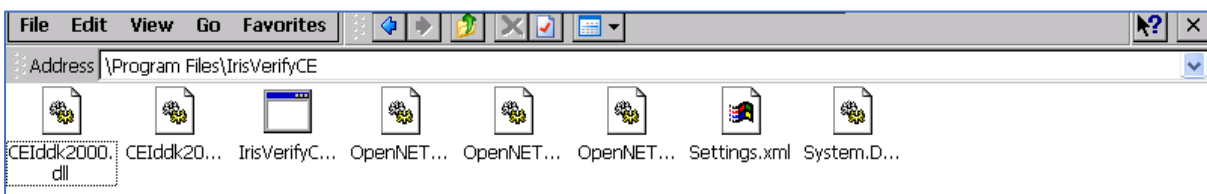
Double tap on 'IrisVerifyCECab'. It will initiate installation process on PVP.



Press 'OK' button to proceed on installation process. Do not alter default installation location.



Default installation folder on PVP is as shown below.



Reference Manuals

DN-IM001-EN	Installation Instruction Manual
DN-CM001-EN	Configuration Manual
DN-OM001-EN	Operational Manual
DN-SA001-EN	Reference System Architecture

www.sharadsoft.com

Feedback/Support

Your comments will help us serve your iris authentication needs better. If you have any suggestions/support require, then drop the email on 'info@sharadsoft.com'.

Location: Mumbai, India.